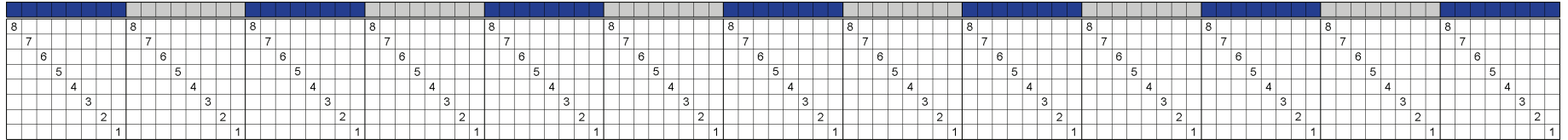




## 8-Shaft Drafts



**Straight threading**

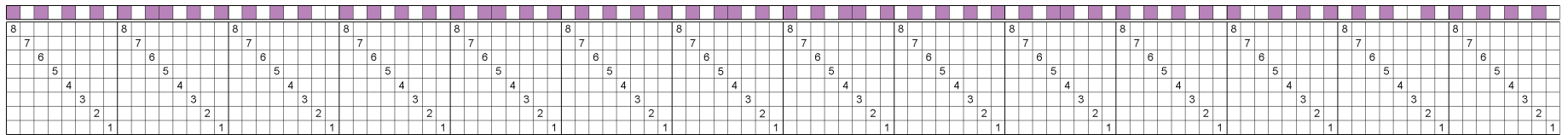
1. Thread all in one color
  - OR
  2. Thread above color order
- Use a light and dark color

**Heddle Counts by Shaft Number:**

Shaft	1	2	3	4	5	6	7	8
Count	13	13	13	13	13	13	13	13

**# of warp ends**

blue	56
gray	48
<b>Total warp ends:</b>	<b>104</b>



**Straight threading**

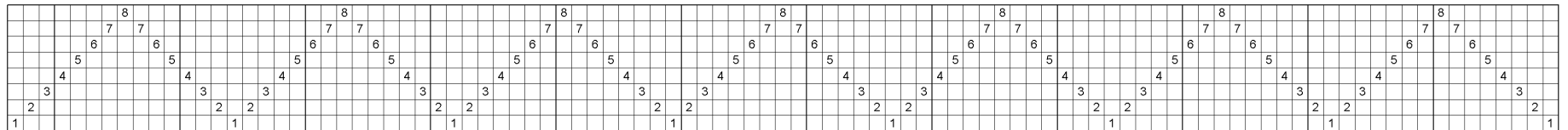
1. Thread all in one color
  - OR
  2. Thread above color order
- Use a light and medium color

**Heddle Counts by Shaft Number:**

Shaft	1	2	3	4	5	6	7	8
Count	14	14	14	14	14	14	14	14

**# of warp ends**

white	55
violet	57
<b>Total warp ends:</b>	<b>112</b>



**Point threading**

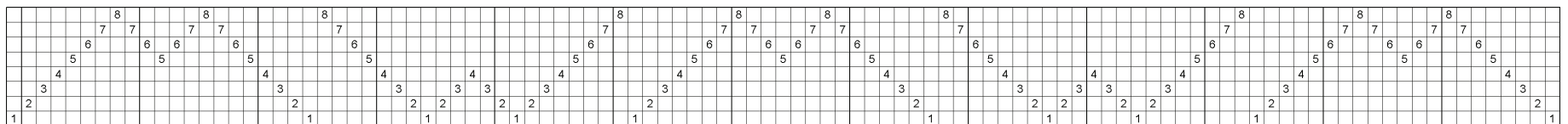
1. Thread all in one color

**Heddle Counts by Shaft Number:**

Shaft	1	2	3	4	5	6	7	8
Count	8	14	14	14	14	14	14	7

**# of warp ends**

**Total warp ends: 99**



**M's and W's Twill threading**

1. Thread all in one color

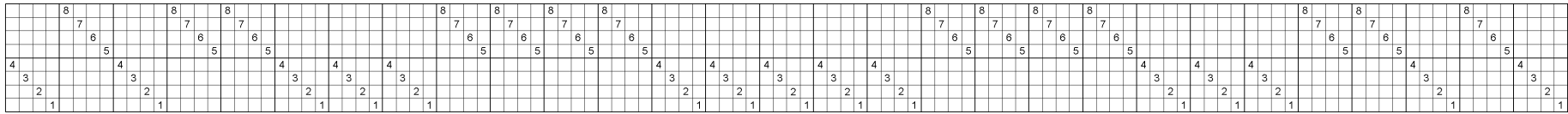
**Heddle Counts by Shaft Number:**

Shaft	1	2	3	4	5	6	7	8
Count	10	14	14	12	13	16	16	10

**# of warp ends**

**Total warp ends: 105**

# 8-Shaft Drafts



Block threading

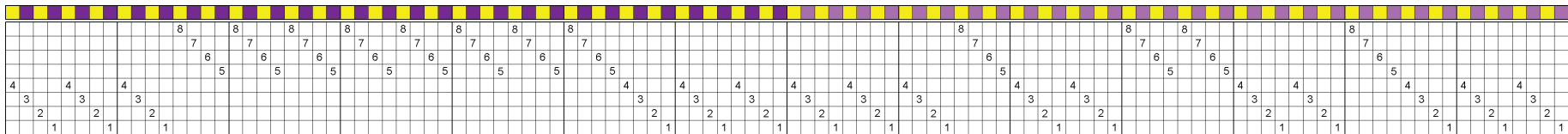
1. Thread all in one color

Heddle Counts by Shaft Number:

Shaft	1	2	3	4	5	6	7	8
Count	15	15	15	15	14	14	14	14

# of warp ends

Total warp ends: 116



DW-Blocks threading

1. Thread all in one color

OR

2. Thread above color order

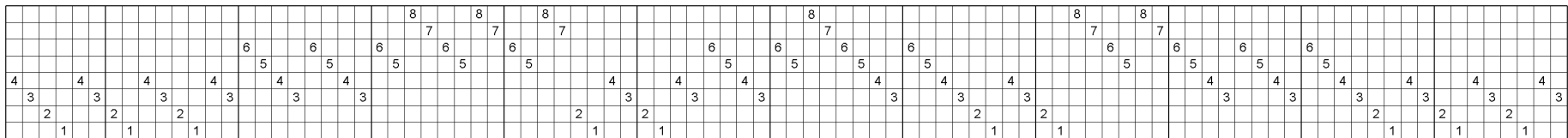
Use 2 shades of a hue and a contrast

Heddle Counts by Shaft Number:

Shaft	1	2	3	4	5	6	7	8
Count	16	16	16	16	12	12	12	12

# of warp ends

yellow	56
dark violet	28
light violet	28
Total warp ends:	112



DW-Colonial threading

1. Thread all in one color

Heddle Counts by Shaft Number:

Shaft	1	2	3	4	5	6	7	8
Count	10	10	18	18	13	13	6	6

# of warp ends

Total warp ends: 94