



Weaver's Bag

Mary Meigs Atwater Weavers Guild of Utah

November 2003

Dear
Tabby:



What is the perfect sett to use with 8/2 cotton?

For 8/2 cotton, and any yarn for that matter, there is no "perfect" sett.

The sett is determined by the product that you are making. In the case of 8/2; if the yarn is sett at 15 ends per inch and woven 50/50 (woven with 15 picks per inch in the weft) you get a soft fabric the is good something like a scarf. A sett of 18 ends per inch would give a fabric that could work well for a jacket and a sett of 24 ends per inch would give a hard wearing kitchen towel. 8/2 cotton (like most other yarns) is very versatile and can be used for many different weaving projects.

If you have any questions about weaving and fiber arts or a great tip to share please submit it to a member of the guild board.



Recipe Book Project.

Goal: To produce a CD version of the Recipe Book that will include a PDF of the actual book and WIF files of the drafts. The CD is to be ready for sale at Convergence. All profit will go to the guild.

November 15th and December 6th, 10am – Noon. BYU, B-77, Room M213, enter by east door, about 1350 North Canyon Road. Playground equipment is in front of building. See the map on web page:

www.MaryMeigsAtwaterWeaversGuild.org

Last two meetings of the year - we will check progress, answer each others questions and collect files.

Ikat

Deanna Baugh and Julie Schwartz

Thursday, November 13th — 7:00 pm

Unitarian Church 6876 South Highland Drive, (20th E), downstairs.

i-kat [ée ka^B] (plural i-kats)

Technique of patterning fabric: a technique for making patterned fabric by using tie-dyed yarn. Come learn about creating ikat wefts and weaving the results. Slides from IWC and Blanding will be shown.



President's Message:

Greetings to W5 (Wild and Warped Women Weavers of Wasatch) and others: I can't believe how fast time is marching forward. Didn't I just write the PRESIDENT'S MESSAGE??!!! Hope you had a hallowed Halloween and are looking forward to a thankful Thanksgiving. We had a fun, and informative program in October, taught by Connie Denton. I am really appreciative of those inexpensive programs. It is a wonderful way to learn/relearn many fiber skills. My project isn't quite finished. I have the top portion to finish but have the directions to complete it. Next month's program is IKAT. Deanna and I took the class in Prescott from Mary Zicafoose. Her technique is for rugs but can be applied to other projects. I've been searching the internet for weaving groups. Many of them have their newsletters online and that allows me and anyone else to find out what is going on with other groups. I'm getting new ideas that we can possibly use. Only time will tell. I'm upset with myself. I didn't get the tea towels done for a wedding gift of a friend's daughter. They're going to have to be a belated gift. The weather has been just too nice. I haven't been able to make myself stay inside. Instead I did more winterizing of my gardens and rode my motorcycle. Hope the dry, warm autumn leads to a wet, colder winter. We certainly need the moisture. Of course then there will be skiing. Tea towels soon!!!!

What projects are you working on? Come join us at the next meeting and let us know.

Oh I almost forgot. In addition to our IKAT program there will be pics from Prescott and the Navaho rugs that were displayed at the Blanding Museum. If any of you have more pics just send them to me email and I'll add them to the "slide" program.

See you in November. — Julie

Guild Library. Susan Hainsworth's home. 801-292-1169, shainsworth@networld.com Susan is willing to bring books to guild meeting. Partial list on web page.

Guild Looms and equipment. Please contact Connie Denton if you would like to rent a guild loom or other equipment. 801-943-4717, cdenton222@aol.com

Guild Project – *The Recipe Book* The Mary Meigs Atwater *Recipe Book*. We hope to have the drafts and CD finished for Convergence 2004 in Denver. More info on page 1.

DUES. To join the Weavers Guild, send \$30 to Treasurer: Charlene Lind, 2974 N 320 E, Provo, UT 84604, clind@juno.com

Ads: See the web page for ads. If you would like an ad or link on the web page, contact Judie Eatough, judie@eatough.net.



A contest from *Spin-Off* and *Handwoven* Magazines Convergence is coming to Colorado! To celebrate, *Handwoven* and *Spin-Off* magazines invite you to enter a contest—What's Hot! There will be awards for each category, a best-of-show for handspun, and—the first place winner overall receives \$500. All entries will be eligible for a prize drawing. You need not attend Convergence to enter and win. Contest entries must be a 12" x 12" fabric swatch or a scarf of any size that shows unusual surface texture produced by:

Differential shrinkage: Use two or more fibers to cause distortion in the finishing. **Felting or fulling:** Use protein-based fibers to their full (pardon the pun) advantage to create dense, snug fabrics, or mix-and-match fiber types to create intriguing textures. **Active twist yarns:** Use yarns with lots of energy to create gauzy fabrics with a life of their own. **Unusual fibers:** There are so many new fibers to weave with on the market now: tencel, raffia, Soy Silk, paper, stainless steel, exotic fibers, and more! **Burnout (devoré):** Add acid to a woven fabric composed of cellulose fiber such as rayon or cotton and a non-cellulose fiber such as silk or polyester to create a unique cloth.

Innovative use of weave structure: Push the boundaries of your favorite weave structure and see what happens. For example, use fat tabby threads in overshot or full deflected doubleweave and see what happens.

Entries must be handwoven. To enter, send the swatch or scarf (or slide, photo, or high-quality digital image of at least 300 dpi) by April 1, 2004 to:

What's Hot!, Interweave Press, 201 E. Fourth St., Loveland, CO 80537-5655

Include the draft, fiber content, and a brief description of weaving process and finishing techniques used. Please include complete contact information including name, address, phone, fax, and e-mail. Look for examples of fabrics with these techniques in the January/February 2003 "What's Hot!" issue of *Handwoven*. For inspiration, see the tips that accompany the articles in that issue or visit our website, www.interweave.com/spin/spinoff_magazine/hot_tips.asp.

We look forward to receiving your entries!



Interweave Press has a special reduced rate subscription offer for guild members. Beadwork, *Handwoven*, *Interweave Knits*, *Piecedworks*, and *Spin Off* are all eligible for this offer. Orders can be made by phone or mail until 31 December 2003. Contact Judie Eatough for details and special code.



Julie Schwartz is the new president of the Mary Meigs Atwater Weaving Guild, which she still finds a little surprising since she has been a member of the guild for four years and has been weaving only that long also. When Julie and Steve moved to Utah, Julie's sister, a weaver and fiber person in Michigan, did an internet search for her and found the MMA guild. Julie is a retired engineer from the Ford Motor Company and lived in the Ann Arbor area in Michigan. After finding the guild here, Julie took a class at Heindselmans with Judie Eatough and has been weaving since then. Her new found friends in the guild have even convinced her that she should try knitting and beading (which she hates) and spinning. Her first loom, a gift from her sister, is an old 36" LeClerc counterbalance which Julie uses for her favorite---rug weaving. Julie has since acquired a Schacht table loom and a Macomber 48" eight shaft floor loom with two more harnesses on the way. She also owns an inkle loom and a spinning wheel. She has enjoying learning about all the structures in weaving and is looking forward to doing some fine weaving for use in dress fabrics.

Julie is an avid motorcyclist, she owns a right-me-a-ticket red Honda Gold Wing, loves gardening and playing on the computer. She belongs to two book clubs in the Heber area and especially likes fast-paced mysteries.



CONVERGENCE 2004 DENVER UPDATE

Entry deadlines start January 2, 2004.

Fiber with Altitude – Garments with Attitude: Wearable Art Fashion Show and Exhibit

I Can See For Miles- Yardage Exhibit.

Don't Fence Me In-Containing the West: Basketry Exhibit

Mountain Majesty- Portray the Mountains with Fiber Exhibit

Queen of the Plains-Handweaving Exhibit

Roving the Range-Handspinning Exhibit

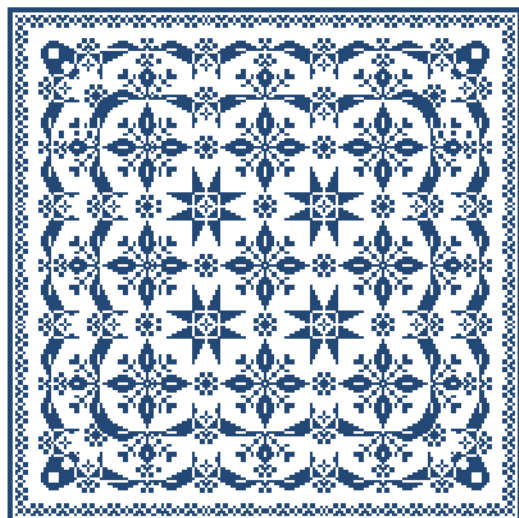
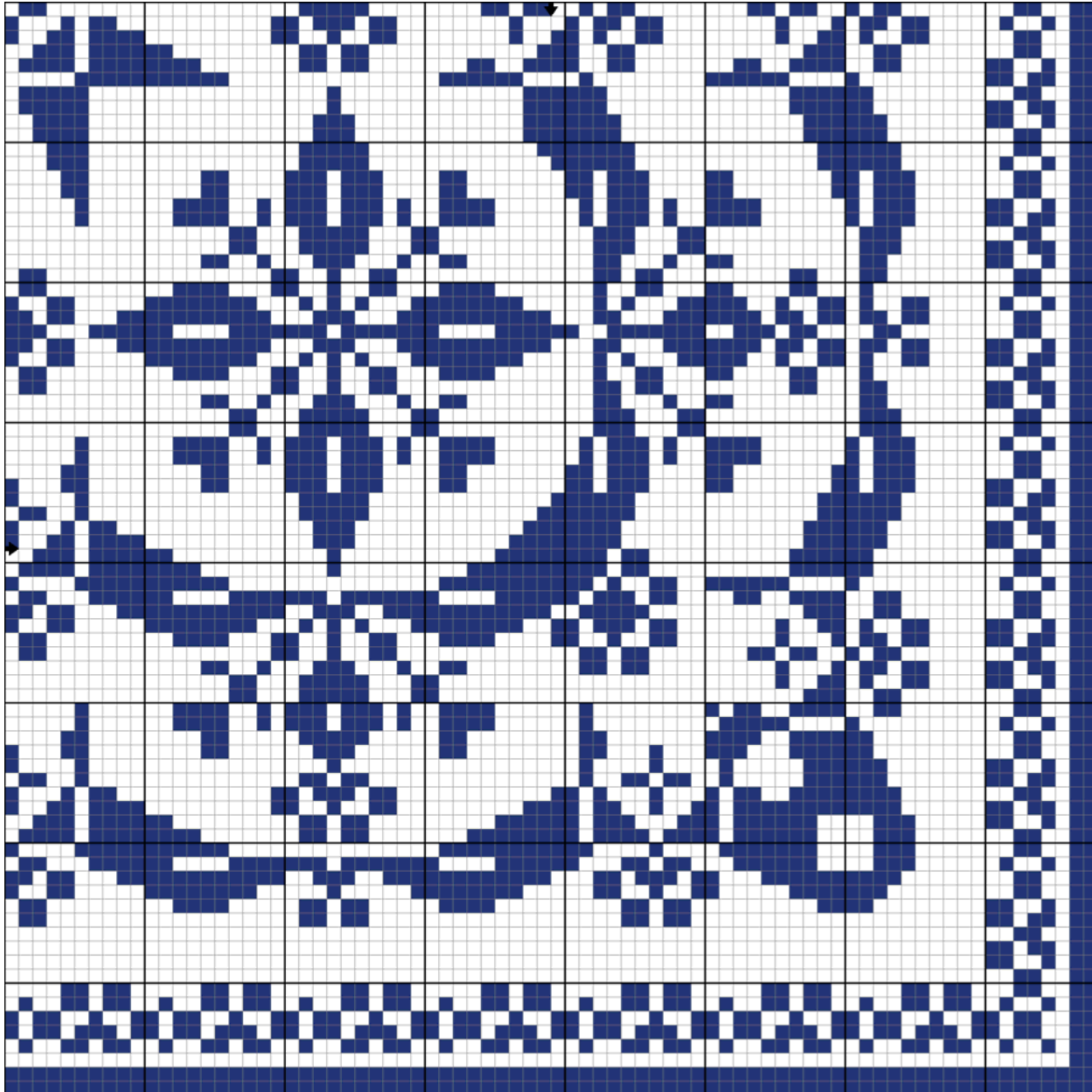
Small Expressions 2004

Trail Mix-Interlaced Techniques Exhibit

For prospectus information on entering exhibits and exhibit awards contact HGA at www.weavespindy.org then click on Convergence 2004 or email hgaconvergence@weavespindy.org

Registration forms for Convergence are in the current issue of *Shuttle Spindle & Dyeplot* and should be online soon.

Recipe Book. Series I, No. 19. Recipe for a Coverlet in Four-harness Double Weave. This is a design for a pick-up technique. It could also be used for cross-stitch or any other needlework technique.



The border repeats do not match the main design motif repeats.

The draft on the left has some additional repeats in the middle. This design has a nice scalloped motif. The stars or floral motifs could be fun in baskets or cross-stitch.

If you do this in Double Weave pick-up, it is easiest to pick-up the units if the warp ends are sleyed 4/dent.



Sharon Alderman one day workshop, 10 January 2004. Send \$25 check to Charlene Lind to reserve a space in the workshop. Limit: 30.

Directory: See information at the bottom of the next page and send you information to Judie Eatough or fill out form at guild meeting or on the internet.

Mary Meigs Atwater Weavers Guild Calendar:	2003 – 2004 Board
13 November 2003 7:00 pm Unitarian Church* Julie Schwartz and Deanna Baugh: Ikat — hands on demo	President: Julie Schwartz 435-654-0746 jdschwartz@aol.com Vice-President: Connie Denton 801-943-4717 CDenton222@aol.com
11 December 2003 7:00 pm Unitarian Church* Christmas party – Pot luck Dinner, Gift exchange – bring a homemade gift	Secretary: Diane Haueter 435-654-1486 Treasurer: Charlene Lind 84604,801-375-7532, cllind@juno.com 2974 N 320 E, Provo, UT
10 January 2004 9:00 am – 4:00 pm Saturday One Day Workshop: Limit 30 Come help us celebrate Sharon Alderman's new book and spend the day with her. Understanding Weave Structures: Only \$25 Mail check to treasurer, Charlene Lind.	Grants: Heidi Smith 435-649-3856, 3smiths@xmission.com Grants: Patti Pitts 801-582-0271, utweaver@comcast.net
12 February 2004 7:00 pm Unitarian Church* Charlene Lind: Overshot	Committee chairs: Hospitality: Patti Pitts, 801-582-0271, utweaver@comcast.net Library: Susan Hainsworth, 292-1169, Shainsworth@networld.com
11 March 2004 7:00 pm Unitarian Church* TBD	Equipment: Connie Denton 943-4717, CDenton222@aol.com
16 – 17 April 2004 Statewide meeting 18--20 April 2004 Workshop Michael Rhode will be the keynote speaker and workshop leader for the statewide meeting. http://www.michaelrohde.com/index.html	2004 Statewide Meeting Chair: Karna Petuskey 2005 Guild Show Chair: Teri Jo Mauch Principle Agent: ReNeé Page 942-6548 Newsletter: Judie Eatough 801-375-5535, judie@eatough.net 1252 N Uinta Dr, Provo 8464-2905
13 May 2004 TBD	Guild Webpage www.MaryMeigsAtwaterWeaversGuild.org
June 2004 Saturday (12 or 19), Kathy's meadow Meeting/program Judie Eatough: Card Weaving	To Join Guild Email List: Send an email to MMAWG-subscribe@yahoogroups.com
27 June - July 3 2004 Convergence in Denver We're planning a get-together of those attending.	Contacts for Organizations, web links IWC Rep: Sandra Sandberg sandberg@dixie.edu IWC: http://www.sdc.org/iwc1999/
TBD August 2004 Basket weaving at Julie's	Utah HGA Rep: Charlene Lind 375-7532 HGA: http://www.weavespindye.org/
September 2004 With sheep dog trials. A 1-day workshop is being planned.	Complex Weavers Rep: Charlene Lind CW: http://complex-weavers.org/
*South Valley Unitarian 6876 South Highland Drive, (20th E), downstairs.	Wasatch Woolpack Handspinners: http://members.tripod.com/woolpack/index.html



Directory: New directories will be out soon. Please check your information and send changes to Judie Eatough. Information included: Name, phone, work phone or cell phone, address, email, equipment, software, other fiber organizations of which you are a member, Interests: (such as clothing, household textiles, wool, silk, etc.); and Bio: let's add a '25 word or less' biographical comment. You can send information by email, mail, or fill out the form on the web site and email it to me.

Directories will be available at the December guild meeting or will be mailed with your January newsletter.