



# Weaver's Bag

Mary Meigs Atwater Weavers Guild

December 2004

## Holiday Party

December 9<sup>th</sup> 2004 — 6:30 pm

Terri Jo Mauch's home: 2800 Oquirrh Drive Salt Lake City

Bring a dish to pass and a gift to exchange. The gift can be handmade or purchased. Gifts in the past have included jams, buttons, baskets, soap, fiber, yarn and even woven items (both commercial and handwoven). Gather at 6:30, dinner at 7pm.

Directions to Terri Jo's home.: Off Foothill Blvd: Go east on 1300 S. to Oakhills. Turn left. Go short distance to Oquirrh. Turn rt and Terri's home is on the right. Off Sunnyside/Emigration: Just past the zoo turn rt on Wasatch Dr. Go to Kennedy and turn left. Take first right (Oakhills) to Oquirrh. Turn left. Terri's home is on the right. See map below.

### President's Message

I just finished turkey dinner with friends. It was fabulous. Hope you have had a great Thanksgiving holiday and are ready for Christmas celebrations. We have several friends and family coming in so that means I have some house cleaning to get done including rug shampooing (yuk). I also haven't finished my Christmas gifts that I have planned to do. Steve says He's not holding his breath on the completion timing. I'll show him!

I'm looking forward to our Weavers Guild holiday get together at Terri Jo's home. All of you always bring such unique gifts and such good food. We'll have the table setups and beverages and turkey and stuffing and you bring a gift (if you want) and a dish to pass.

Our January 13 program is painted warps with Deanna passing on her knowledge in that area. Also, if you have done any painted warps, bring them along to share.

On January 15 is a fun day at PCH. It's open to anyone. Bring whatever you're working on whether it's weaving on a portable loom or one of the 3 or 4 looms at PCH that have warp on them, or spinning, knitting, tatting, quilting, etc. Bring a snack for the grazing table. Cost is \$2 to cover beverages, cups, plates, plasticware, napkins. Time is 9:00 am – 3:00 pm. Everyone is welcome.

Got to get back to the Christmas projects. See you December 9 at 7 pm.

*Julie*

### Project Saturday: A Fun Day at PCH!

January 15 is the first fun day – Plan to attend once a month on the Saturday following guild meetings. This should be a fun way to work on projects.



### Guild Workshops:

**Woven Shibori Workshop** - The first dye session has been postponed until Friday, Jan 21, 6 pm at Patti Pitts home to give people time to weave their samples. Following dye sessions have been tentatively scheduled for Fridays Feb 18 and April 8.

Wear old clothes and/or an apron, bring gloves for dyeing, and a plastic bag to transport your dyed sample back home. The sample information has been mailed out, please contact Barbara Cabrol at [sbcabrol@earthlink.net](mailto:sbcabrol@earthlink.net), or the new phone number (801) 544-8748 with any questions you probably have as it was written during the commotion of our move. We will meet briefly at the Nov 11 guild meeting to review progress and plan for the premixed dyes.

**Recipe Book and Structure:** December 11<sup>th</sup>: More twills. January 29<sup>th</sup>: Lace. 10 am to Noon, Meetings will be in M213, B-77, BYU, Provo UT, about 1400 N University Ave. Contact Judie Eatough 375-5535, [judie@eatough.net](mailto:judie@eatough.net) with questions.

### Workshop: Katie Meek, Weaving with Linen

Friday, Saturday and Sunday: 11-13 March 2005  
Reserve a place in the workshop by sending \$25 to Charlene Lind, 2974 N 320 E, Provo, 84604

**Weavers...**don't forget that our **guild show** for March of 2005 is at Red Butte Garden and will reflect the guild challenge of using plant fiber—cotton, linen and soy. Also any other plant related material, such as pine needles and other basket materials. Red Butte is planning a correlating display of the plants that created the fibers we used in our show. We will need to know in February what you are exhibiting and have the items by 5 March. Items may also be sold at this show - 35% commission. Wouldn't it be wonderful if everyone had a piece in the show!!

**DUES.** To join/renew the Weavers Guild, send \$30 to Treasurer: Charlene Lind, 2974 N 320 E, Provo, UT 84604, [clind@juno.com](mailto:clind@juno.com) Dues are payable each year in September-October. The mailing label should indicate 2005 if you have paid dues for the year.

**Guild Looms and equipment.** Please contact Sara Lee Neill if you would like to rent a guild loom or other equipment. Phone: 801-829-3703, Email: [slnell@xmission.com](mailto:slnell@xmission.com) A complete list of the guild's rentable equipment will be available soon.

**Guild Library.** Susan Hainsworth 801-292-1169, [shainsworth@networld.com](mailto:shainsworth@networld.com) The library will be open during guild meetings at Pioneer Craft House this year.

**Ads:** See the web page for ads. If you would like an ad or link on the web page, contact Judie Eatough, [judie@eatough.net](mailto:judie@eatough.net).

This years Guild Directories will be available at guild meeting in December. They will be mailed with the January newsletter.

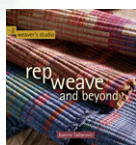
<b>Mary Meigs Atwater Weavers Guild Calendar</b>	
Thursday 9 December 2004 hosted by Teri Jo Mauch	March 2005 Workshop (TBA)
Thursday 13 January 2005 PCH Handpainted Warps by Deanna Baugh	Thursday 14 April 2005 PCH Woven Metal by Judie Eatough
Thursday 10 February 2005 PCH Small Books by Diane Haueter and Patti Pitts	Thursday 12 May 2005 PCH Abecedarian Weaving by Patti Pitts
5 March 2005 Show entries due Thursday 10 March 2005 Show opening at Red Butte Garden Lecture Katie Meek	Saturday 11 June 2005 Picnic at Kathy's Meadow Small Basket by Connie Denton
Workshop: Katie Meek Weaving with Linen. Friday, Saturday, Sunday 11-13 March 2005 9am – 4pm	July 28 – 31 IWC at Durango, CO <a href="http://www.intermountainweavers.org/">http://www.intermountainweavers.org/</a>
<b>2003 – 2004 Board</b>	
President: Julie Schwartz 435-654-0746 <a href="mailto:jdschwartz@aol.com">jdschwartz@aol.com</a> Vice-President: Patti Pitts 801-582-0271, <a href="mailto:utweaver@comcast.net">utweaver@comcast.net</a> Secretary: Diane Haueter, 435-654-1486 Treasurer: Charlene Lind, 801-375-7532 2974 N 320 E, Provo, 84604, , <a href="mailto:clind@juno.com">clind@juno.com</a> Grants: Teri Jo Mauch Grants: Deanna Baugh	<b>Committee chairs:</b> Hospitality: Connie Denton 943-4717, <a href="mailto:CDenton222@aol.com">CDenton222@aol.com</a> Library: Susan Hainsworth, 292-1169, <a href="mailto:Shainsworth@networld.com">Shainsworth@networld.com</a> Equipment: Sara Lee Neill, <a href="mailto:slnell@xmission.com">slnell@xmission.com</a> Guild Show: Patti Pitts Principle Agent: ReNeé Page 942-6548 Newsletter: Judie Eatough 801-375-5535, <a href="mailto:judie@eatough.net">judie@eatough.net</a> 1252 N Uinta Dr, Provo 8464-2905
<b>Guild Webpage</b> <a href="http://www.MaryMeigsAtwaterWeaversGuild.org">www.MaryMeigsAtwaterWeaversGuild.org</a>	<b>To Join Guild Email List:</b> Send an email to <a href="mailto:MMAWG-subscribe@yahoo.com">MMAWG-subscribe@yahoo.com</a>

**New Books:** *The Coverlet Book* by Helene Bress (2 volumes) <http://www.thecoverletbook.com/index.htm>



The retail price is \$165. An introductory price of \$125 (plus \$7.50 shipping and handling in the US) will end on January 31, 2005. Three or more copies shipped with free shipping; they can invoice the books separately. 301-654-1996. See table of contents and sample pages in pdf format on the web page. This book has been suggested as an addition to the guild library.

The previous large coverlet books (*Of Coverlets* and *Keep Me Warm One Night*) currently sell used for \$200 to \$500.



Joanne Tallarovic's *Rep Weave and Beyond* (\$24.95) is now available from Interweave Press, bookstores, and Joanne. Joanne Tallarovic, 3140 E Matterhorn Dr, Flagstaff AZ 86004, 928-526-4921  
[jbtallarovic@earthlink.net](mailto:jbtallarovic@earthlink.net)

**Increase your knowledge and skills at a Regional Conference**

Southeast Fiber Forum Association (SFFA)

March 4-6, 2005 <http://www.main.nc.us/sffa/index.html>

Association of Southern California Handweavers (ASCH)

March 9-13, 2005 (Escondido, CA) <http://aschsite.org/2005>

Florida Tropical Weavers Conference

March 17-20, 2005, (Lake Yale, FL) <http://www.ftwg.org>

Conference of Northern California Handweavers (CNCH)

April 14-17, 2005 (Asilomar, CA) <http://www.cnch.org/>

Contemporary Handweavers of Texas (CHT)

April 15-17, 2005 (Austin, TX), <http://www.contemporaryhandweaversoftexas.org/>

New Zealand Spinning Weaving and Woolcraft Society.

April 19-22, 2005 (Ashburton, New Zealand) <http://www.creativefibre.org.nz>

Ontario Handweavers and Spinners (OHS)

May 13-15, 2005 (Kingston, Ont) <http://www.ohs.on.ca/OHSconference.htm>

Midwest Weavers Association (MWA)

June 13-18, 2005 (Sheboygan, WI) <http://www1.lakeland.edu/midwest2005/index.htm>

Creative Strands

July 6-10, 2005 (Johnstown, PA) [www.creativestrands.com](http://www.creativestrands.com)

Mid Atlantic Fiber Association (MAFA)

July 12-17, 2005 (Leesburg, VA) <http://www.mafafiber.org/conference.html>

New England Weavers Seminar (NEWS)

July 21-24, 2005 (Andover, MA) <http://www.newenglandweaversseminar.com/>

Intermountain Weavers Conference (IWC)

July 28-31, 2005 (Durango, CO) [www.intermountainweavers.org](http://www.intermountainweavers.org)

Association of Northwest Weavers' Guilds (ANWG)

August 1-7, 2005 (Tacoma, WA) <http://northwestweavers.org/>

Eastern Great Lakes Fiber Conference (EGLFC)

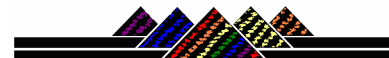
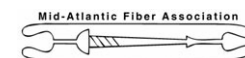
October 7-10, 2005. <http://www.easterngreatlakesfiberconference.org>

Arizona Federation of Weavers and Spinners Guilds

2006 <http://www.azfed.org/>

Missouri Fiber Association (MOFA)

2006 [www.missourifiberartists.com](http://www.missourifiberartists.com)



~~~~~

*Boundin'* - A Fleece Film: <http://www.pixar.com/shorts/bdn/index.html>

Pixar's new movie "*The Incredibles*" begins with an animated short called "*Boundin'*". *Boundin'* is a fable about a lamb that is so proud of his fleece that his self esteem is crushed when he gets sheared. It's a tale about rebounding from life's surprises. It's very cute. (Check out the drawings on the pixar web site.) Review by Julie Schwartz.

~~~~~

Some links to explore:

Articles and projects: <http://www.weavespindye.org/c/1/54/html/heart2.html>

We have a cord maker that you can rent: : <http://www.lindahendrickson.com/> How to make cords for ply-split braiding. These also make great cord for lots of Christmas projects and ribbons.

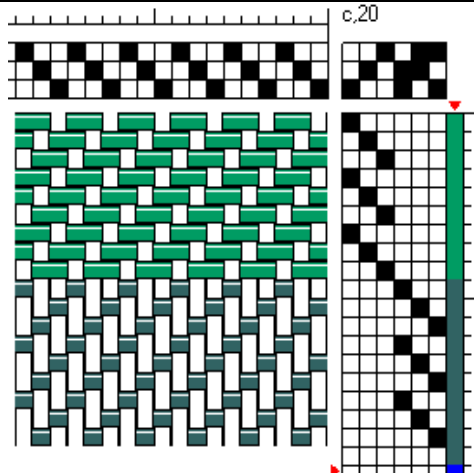
Complex Weavers: <http://complex-weavers.org/index.htm>

Towels: <http://www.freenet.edmonton.ab.ca/weavers/towelex.html>

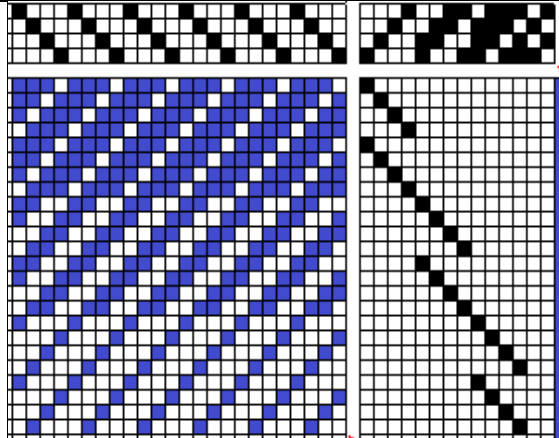
Tablet weaving designs and software for designing: <http://www.quntram.co.za/tabletweaving/>

Several twill threadings are illustrated below. For the December 11<sup>th</sup> study group meeting we will explore twill threadings including advancing twills, tie-ups, counters, color and other ideas.

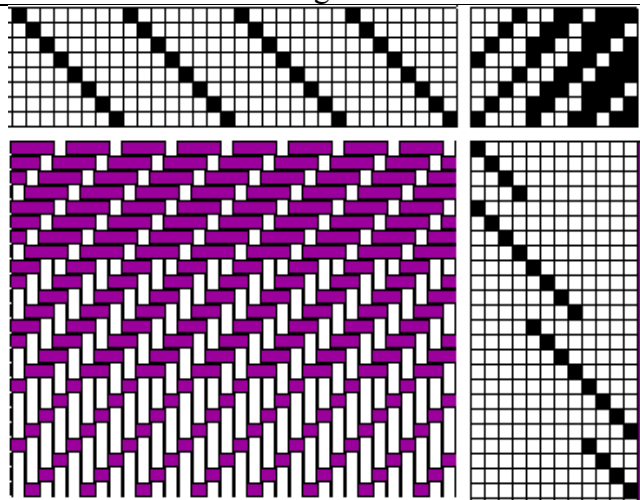
1. Two three-shaft twills: 1/2 and 2/1



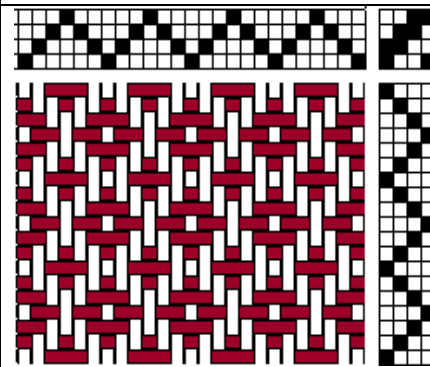
2. Four-shaft twills: 1/3, 2/2, and 3/1



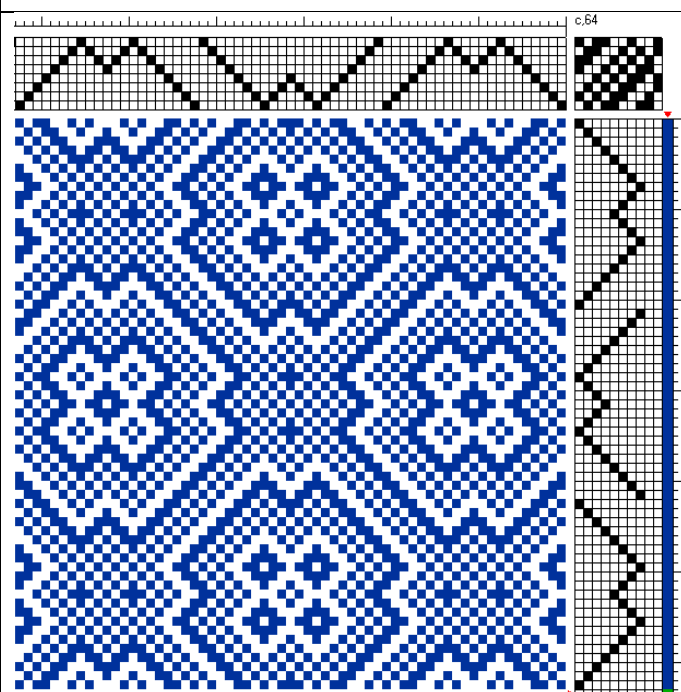
3. Four-shaft twills using 8-shafts



Point Twill



M's and W's - twill



Rosepath on 4-shafts

