

# Weaver's Bag

Mary Meigs Atwater Weavers Guild

June 2005

## **Berry Basket by Connie Denton Saturday • June 11<sup>th</sup> • 11 am Kathy's Meadow, Park City, Utah**

Directions: From I-80 take the Kimball Junction exit and turn right and proceed towards Park City. The third stop light is at the Blue Roof. Right after the stop light turn left onto Old Ranch Road. Go ½ mile. There will be a Kathy's meadow sign on a mail box on the right. Turn right down dirt lane, you will cross a cattle guard, road ends in driveway. (½ mile)

Bring a dish to pass and your basket weaving tools, if you have some available. (Scissors for reeds, a towel, bucket, etc.) Everyone is welcome

### ***President's Message***

Hello all: Hope you're ready for the summer months. They are here.

Elections have been completed. I'd like to thank all of you for your support these last two years. They have been great for me. I decided I shouldn't shed tears because any addition to the reservoirs, rivers creeks might make them go over their banks although it is good to see all the green that the moisture has given us. I welcome Patti to the helm. Congratulations to the newly elected/appointed board positions.

Now you don't get to stop hearing from me completely as I will be doing the newsletter starting with the early August/summer newsletter. It's just a different way of communication from me. If there are things you would like to see changed or added to the newsletter, please let me know. Also if there are items that you want added to the calendar, let me know.

Our June meeting is at Kathy's meadow. The program is weaving a small berry basket. It's really cute. The cost is \$12 but you should have already contacted Connie to let her know that you wanted to participate. I don't know if she ordered extra materials. Call her directly to find out if you can still join us. Otherwise you're going to have to come prepared to spin, knit, weave, etc.

The program will start at 11 am for the basket makers. The rest of us can roll in between 11 and 12:00. We'll have lunch from about 12 ish to 1:00 ish, do some sharing of what is new with each of you (until 1:30) when the basket makers will go back to work. The basket takes about 4 hours to make so you

should be able to finish before you leave for the day. Bring a dish to pass. The guild will provide set-ups and beverage (lemonade, water).

If you have equipment signed out please check in with Sara Lee as to how long you intend to use it. We're making a concise list and need your input

If you weren't able to complete a survey of what you would like for the next year, then email Patti, Susan or me of your interests so we can add it to our data and incorporate what we can at our summer board planning meeting. (See survey questions, page 5)

There is a happening that will occur before the next newsletter. It's a garage sale. It will be August 6 at Patti's home. We'll let you know about specifics by the yahoo website.

See you at IWC in Durango..... *Julie*

### **Congratulations to our new officers:**

President:	Patti Pitts
Vice President:	Susan Hainsworth
Secretary:	Dian Cheney
Treasurer:	Beth Myer
Grants Officer:	Rebecca Raybould (two year term)
Grants Officer:	Deanna Baugh
Appointed Board Members:	
Principle Agent:	ReNeé Page
Library:	Karna Petuskey
Equipment:	Sara Lee Neill
Hospitality:	Timmy Burton
Newsletter:	Julie Schwartz
Web Site:	Judie Eatough
2006 Statewide Meeting:	Julie Schwartz
2007 Guild Show:	Charlene Lind
2008 COE Weaving:	Judie Eatough/Charlene Lind

**Board Meeting**

We're going to have a transition meeting for the old and new MMAWG boards on Friday, August 5, 2005. It will be a potluck dinner at Patti Pitts' house at 6 pm. Please come and bring all your ideas and hopes for the coming year.

**Library Books:**

Karna Petuskey is finishing up the library inventory and a new library list. Watch the web page for an update. [www.mmawg.org](http://www.mmawg.org). karnaP@aol.com.

**Scarf and Towel Exchange:**

There are still openings in the towel and scarf exchange for February 2006. Contact Julie or Patti to participate.

**September Meeting:** Our opening meeting this next September will be a workshop with Bobbi Irwin on September 24. Mark your calendars. It will be The Magic of Iridescence. To participate in the workshop, send a \$10 deposit to Charlene by June guild meeting.

**Back of the Wasatch:** We plan to participate in Back of Wasatch also. I need a volunteer to head the sheep to shawl project. Contact Julie Schwartz if you are interested.

Fiber Artists And Spectators Will Enjoy Demonstrations, Workshops, Competitions And Beautiful Fiber Arts From Throughout America.

A fiber festival is a gathering of fiber producers and consumers where fiber is shown, touched, appreciated, evaluated, demonstrated and purchased on the hoof and ready to wear. It will feature not only finished products but will also showcase fiber producing animals (sheep, goats, llamas, alpacas) and vendors involved in every phase of fiber art productions (spinners, weavers, dyers, felters,

knitters, crocheters, quilters, soap makers, paper makers) and everyone who is interested in learning more about natural fiber and farm arts.

The Back of the Wasatch Fiber Festival was first held in 1998 by local fiber artists. For the first five years it was held at the Summit County Fair Grounds. In this it's seventh year it's found a new home at the Soldier Hollow Classic Sheepdog Championship. It's educational and it's also a great way to promote and preserve our heritage of natural fiber production and traditional textile arts.

**DUES:** To join/renew the Weavers Guild, send \$30 to Treasurer: Charlene Lind, 2974 N 320 E, Provo, UT 84604, [clind@juno.com](mailto:clind@juno.com) Dues are payable each year in September-October. The mailing label should indicate 9/05 if you have paid dues for the year.

**Guild Looms and Equipment:** Please contact Sara Lee Neill if you would like to rent a guild loom or other equipment. Phone: 801-829-3703, Email: [sneill@xmission.com](mailto:sneill@xmission.com) A complete list of the guild's rentable equipment will be available soon.

**Ads:** See the web page for ads. If you would like an ad or link on the web page, contact Judie Eatough, [judie@eatough.net](mailto:judie@eatough.net).

**The Guild Directory with corrections/additions** is available by email. If you would like a pdf copy of the updated directory, contact [judie@eatough.net](mailto:judie@eatough.net).

**IWC:** July 28–31 IWC at Durango, CO If you are going to Durango plan to meet and visit with other guild members who are going. Get details at the June guild meeting or contact Julie Schwartz.

I have learned from Mary Atwater and the *Recipe Book* since joining the guild. She has left a legacy in terms of ideas and techniques. I wanted to share with you some ideas for upcoming projects that start with the *Recipe Book* drafts.

Series V, No., 1

Plain Weave or a birdseye twill for background.

Small twill patterns in lots of colors

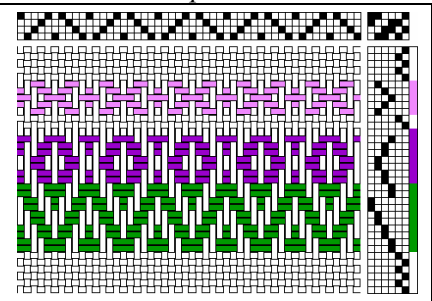
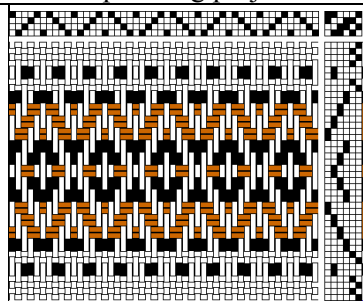
Play with colors and yarns to create fun borders.

Some drafts will require tabby.

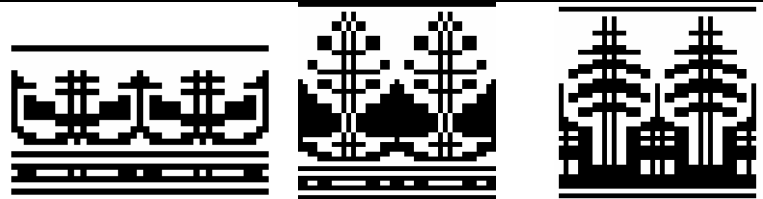
This is a rich source of ideas – color and treadling

order can be varied. Borders are fun for towels.

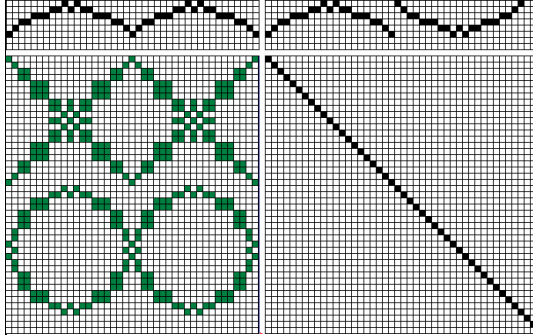
Embroidery floss or pearl cotton in the borders and a linen warp/weft work together well.



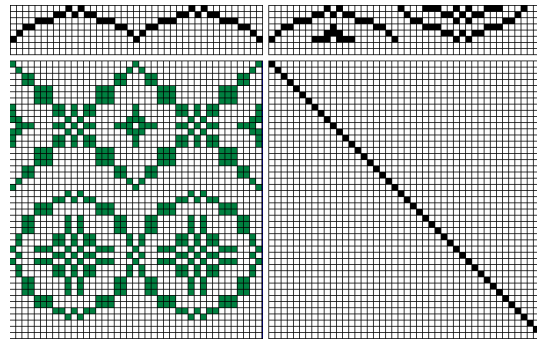
Series V, No. 11, the Botanical garden draft is a summer and winter threading. There are some lovely suggestions for tree like shapes on this page.



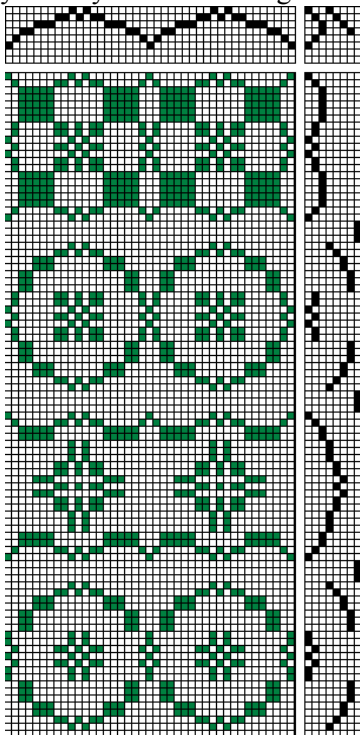
Now try experimenting with the profile draft. Keeping the threading the same, play with the treadling. Here is the design done star fashion and then a rose fashion version. This is a convenient way to design in several programs. Start with the threading, leave the tie-up blank and do a straight draw for the treadling. Now click in the drawdown to add blocks.



Try adding some detail inside large areas. Since the goal is to create a draft that can be woven on an 8 shaft loom with 10 or 12 treadles, I have kept the symmetry such that there is a reverse in the center of the treadling for each motif.

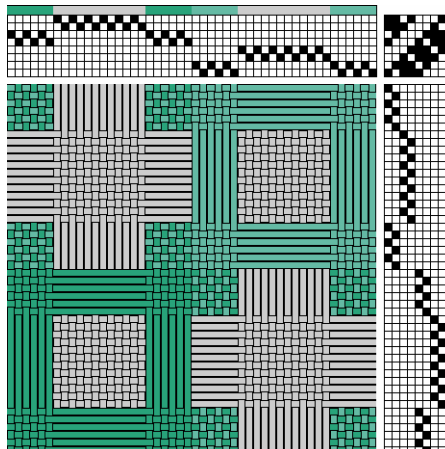


Now try some more ideas and reduce the tie-ups to remove duplicates and take advantage of the symmetry in the treadling.



Series IV, No. 14

Here is a draft I want to play with and try out. I would do the greens or darker areas in two colors of a fine wool that would shrink. Something like an 18/2 merino wool from Jagger spun. The gray or light areas in tencel or silk perhaps in several colors. When finished the wool would shrink and the tencel/silk areas would pouff. There would be a lot of shrinkage in this project. Shrinkage would be more than ten percent. This is my starting point for the scarf exchange. Next February you can see where the idea leads me.



## Editor's Note:

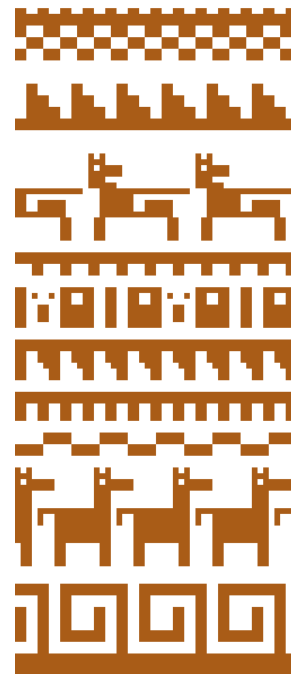
I have learned a lot about Mary Atwater from her writings and books. Included in the recipe book are most of the ideas weavers are exploring now. It is fun to see the many drafts adapted from her books. She truly did an amazing amount of research and experimentation. The guild library has many of the Shuttle Craft Bulletins or download many of them from <http://www.cs.arizona.edu/patterns/weaving/scbulletin.html>. Many of Mary's monographs are also on Ralph's web site. See inkle and card weaving.

I have developed a love of the little frog motif that has been used as a symbol on the guild's newsletters for most of the past 49 years.

I have enjoyed doing the newsletters since the fall of 1999. I have learned a lot, computer software has changed a lot and it has been an enjoyable experience. I have made some errors (forgetting to change the meeting date is pretty obvious) but I have been much encouraged with your kindness and forbearance. The guild's motto was you can not weave well enough alone. Members of the guild have taught, inspired and befriended me over the years. I want to acknowledge the guild and its members as an important part of my development as a weaver. It has been fun, exhausting and exhilarating to share these years.

I turn the newsletter over to Julie, knowing she will enjoy the assignment. I appreciate the time and service that you all contribute to the guild.

Thank you, Judie Eatough



### Mary Meigs Atwater Weavers Guild Calendar

Guild meeting Locations will be the Unitarian Church, 6876 South Highland Drive, (20th E) for April and May.	IWC July 28 – 31 IWC at Durango, CO <a href="http://www.intermountainweavers.org/">http://www.intermountainweavers.org/</a>
Saturday 11 June 2005 Picnic at Kathy's Meadow Small Basket by Connie Denton	Labor Day weekend Back of the Wasatch Fiber Festival <a href="http://www.soldierhollowclassic.com">http://www.soldierhollowclassic.com</a>
Board Meeting: Friday August 5 <sup>th</sup> , Patti Pitts home 6 pm. Pot luck dinner, both old and new board members.	See web page for additional regional conference dates and links.
Saturday, September 24 <sup>th</sup> One-day workshop by Bobbie Irwin	
<b>2004 – 2005 Board</b>	
President: Julie Schwartz 435-654-0746 <a href="mailto:jdschwartz@aol.com">jdschwartz@aol.com</a> Vice-President: Patti Pitts 801-582-0271, <a href="mailto:utweaver@comcast.net">utweaver@comcast.net</a> Secretary: Diane Haueter, 435-654-1486 Treasurer: Charlene Lind, 801-375-7532 2974 N 320 E, Provo, 84604, , <a href="mailto:clind@juno.com">clind@juno.com</a> Grants: Teri Jo Mauch Grants: Deanna Baugh	<b>Committee chairs:</b> Hospitality: Connie Denton 943-4717, <a href="mailto:CDenton222@aol.com">CDenton222@aol.com</a> Library: Susan Hainsworth, 292-1169, <a href="mailto:Shainsworth@networld.com">Shainsworth@networld.com</a> Equipment: Sara Lee Neill, <a href="mailto:sneill@xmission.com">sneill@xmission.com</a> Guild Show: Patti Pitts Principle Agent: ReNée Page 942-6548 Newsletter: Judie Eatough 801-375-5535, <a href="mailto:judie@eatough.net">judie@eatough.net</a> 1252 N Uinta Dr, Provo 8464-2905
<b>Guild Webpage</b> <a href="http://www.mmawg.org">www.mmawg.org</a>	<b>To Join Guild Email List:</b> Send an email to <a href="mailto:MMAWG-subscribe@yahoogroups.com">MMAWG-subscribe@yahoogroups.com</a>



## *Mary Meigs Atwater Weavers Guild Survey*

As we begin to plan the 2005–2006–2007 years, we very much want your ideas. Please answer the following questions and send them to Susan Hainsworth (91 East Parrish Lane, Centerville, UT 84014 or [Hainsworths@ldschurch.org](mailto:Hainsworths@ldschurch.org))

Please list ideas you have for programs and presentations for the Guild next year. These can be programs about weaving, basketry, dyeing, surface design, etc. Who would you like to hear from, and what would you like to learn?

Are there any workshops you would like to have the Guild sponsor? Have you heard of a wonderful workshop presenter who could come here and teach us, for one day or several days?

Are there other things such as meeting format, refreshments, items or format in the newsletter you'd like to see tried? Change is sometimes refreshing.

The 2004-2005 Board thanks you all for your participation and the 2005-2006 Board looks forward to working with you all.