



Weaver's Bag

Mary Meigs Atwater Weavers Guild of Utah

September 2003

Directions to Soldier Hollow: From Salt Lake City, take I-80 East to Silver Creek Junction (exit 148). Go south on U.S. 40 past Jordanelle Reservoir toward Heber City. Take right turn on State Road 113 (100 South) to Midway. Take a left on 113 in Midway, and travel two miles. Turn right just before the railroad tracks and follow signs to Soldier Hollow. Located in Wasatch Mountain State Park, Soldier Hollow is about 53 miles from downtown Salt Lake City.

From Park City, take State Road 248 East to U.S. 40 to Heber City and then follow above directions to Soldier Hollow.

From Provo, take U.S. 189 through Provo Canyon. Immediately at the end of Deer Creek Reservoir, turn left on Route 113 and follow signs to Soldier Hollow.

From Ogden, take I-84 East to I-80 West (exit 168) to Silver Creek Junction (exit 148). Turn left (south). Go south on U.S. 40 to Heber City and then follow above directions to Soldier Hollow.

Recipe Book Project.

Goal: To produce a CD version of the Recipe Book that will include a PDF of the actual book and WIF files of the drafts. Also photos of some woven designs, ideas for variations of the drafts and profile drafts for all block threadings. CD to be ready for sale at Convergence. All profit will go to the guild.

Time Line:

By end of December: To have all of the drafts entered into a weaving program.

By end of March: Proofread all drafts and variations. Create WIF's. Digital photos.

By end of May: Table of Contents with small graphics of each draft. Index. Polish and test all files.

June: Produce CD and mail pre-publication orders.

To help with this project come to the September guild meeting or contact Judie Eatough, judie@eatough.net

List of those drafts to be done in the files section of the MMAWG list page.

<http://groups.yahoo.com/group/MMAWG/>

At the Festival

Saturday, September 20th – Lodge at Soldier Hollow

12:30–2:00 pm

Potluck Lunch and Show and Tell

Come join us for lunch and get acquainted with guild members. Bring a potluck dish. The meeting theme will feature you. In other words, it's show and tell time. Bring any goodies you've made/purchased to share with the group. The meeting will be at the lodge (upstairs) from 12:30 - 2:00 pm, on Saturday. It will be potluck with the Guild providing plates/ napkins/ plasticware and beverages.

President's Message:

Hello all - Welcome to the 2003-2004 Mary Meigs Atwater Weavers Guild new season. I'm really looking forward to it and hope you are too.

Your board met in early August for a planning session for the new season. We're really excited about it. The schedule is still maturing so you'll have to keep checking the newsletter for new changes and additions. But let me tell you of a few things.....

The board voted to set dues at \$30 for the year. They can be paid to Charlene Lind (mailing address 2974 N. 320 E., Provo, UT 84604) at any meeting. We'd appreciate you using an email address to get your newsletter but snail mail is ok too.

Our first meeting of the season will be during the Mountain Spirit Heritage/Back of the Wasatch/Mountain Man Festival at Soldier Hollow in Midway, Utah, September 19 - 21, 2003. The meeting will be at the lodge (upstairs) from 12:30 - 2:00 pm, on Saturday. It will be potluck with the Guild providing plates/napkins/plasticware and beverages. The meeting theme will feature you. In other words, it's show and tell time. Bring any goodies you've made/purchased to share with the group.

We will also have a table in the main tent for info to be shared and will be doing demos. Our demo schedule is Friday, 4 - 7 pm, Saturday, 3 - 6 pm and Sunday 12 - 3 pm. Please let me know if you can demo something and what time is best for you.

You can find further info on the overall festival at www.mtnspirit.org or 435-657-1465.

In October, we have Connie Denton teaching us coiling using waxed linen. You'll need to bring a skein of waxed linen or Connie will have a variety of colors you can buy. It will be about \$11 for the skein.

Hopefully this is enough to "wet your whistle". Hope to see you in September. If you have any comments/suggestions, please call or email me.

— Julie jdschwartz@aol.com 435-654-0746

Guild Library. Susan Hainsworth's home. 801-292-1169, shainsworth@networld.com Susan is willing to bring books to guild meeting. Partial list on web page.

Guild Looms and equipment. Please contact Connie Denton if you would like to rent a guild loom or other equipment. 801-943-4717, cdenton222@aol.com

Guild Project – The Recipe Book The Mary Meigs Atwater *Recipe Book*. We hope to have the drafts and CD finished for Convergence 2004 in Denver. More info on page 1.

DUES. To join the Weavers Guild, send \$30 to Newsletter editor: Judie Eatough, 1252 N Uinta Dr, Provo UT 84604-2905 UT; or to Treasurer: Charlene Lind, 2974 N 320 E, Provo, UT 84604, cllind@juno.com

Ads: See the web page for ads. If you would like an ad or link on the web page, contact Judie Eatough.

2003 – 2004 Board

President: Julie Schwartz 435-654-0746

Vice-President: Connie Denton 801-943-4717

Secretary: Diane Haueter

Treasurer: Charlene Lind

Grants: Heidi Smith.

Grants: Patti Pitts

Committee chairs:

Hospitality: Patti Pitts

Newsletter: Judie Eatough 801-375-5535,
1252 N Uinta Dr, Provo 8464-2905 judie@eatough.net

Library: Susan Hainsworth 292-1169

Principle Agent: ReNeé Page 942-6548

Equipment: Connie Denton 943-4717

2004 Statewide Meeting Chair: Karna Petuskey

2005 Guild Show Chair: Teri Jo Mauch

Guild Webpage

www.MaryMeigsAtwaterWeaversGuild.org

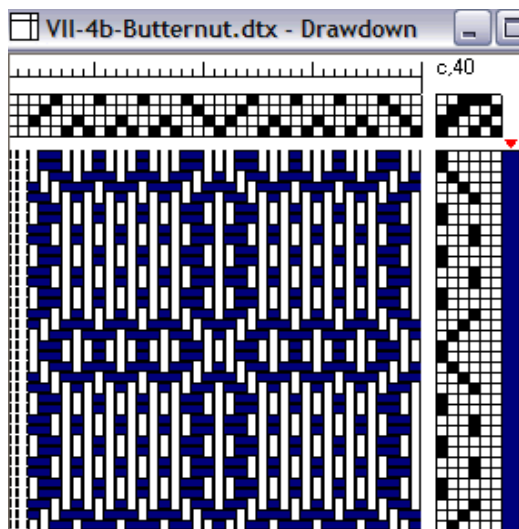
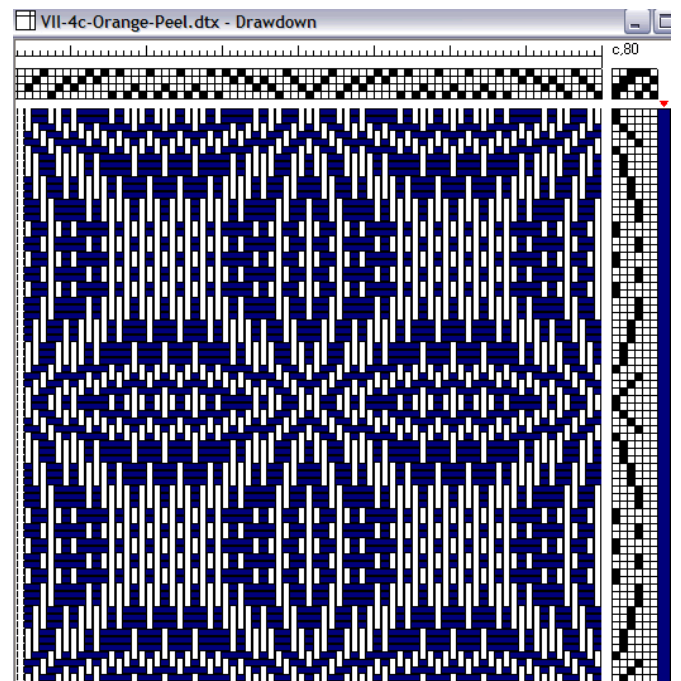
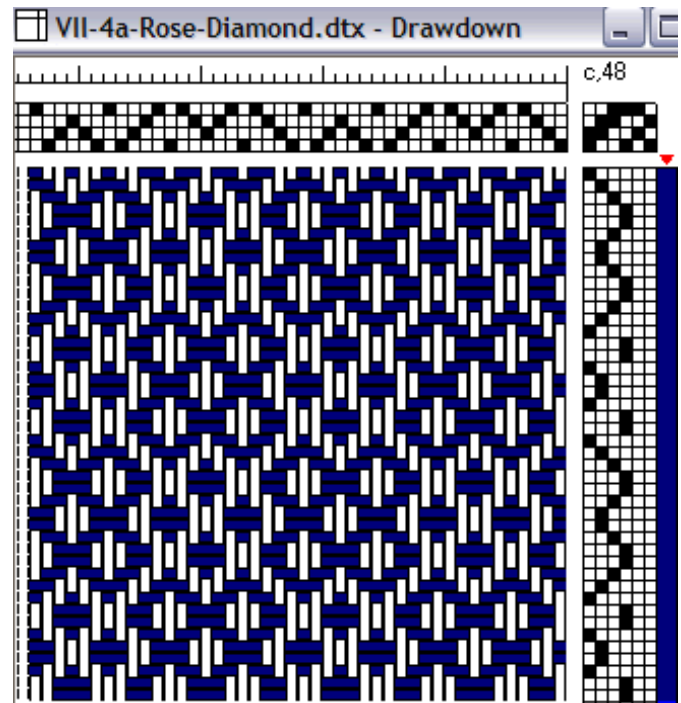
To Join Guild Email List: Send an email to

MMAWG-subscribe@yahoogroups.com

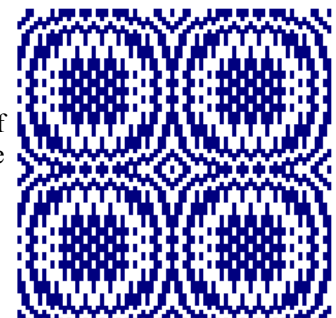
Ruthe's Collection of Weaving Resources

<http://home.interlynx.net/~rstowe/weave.htm>

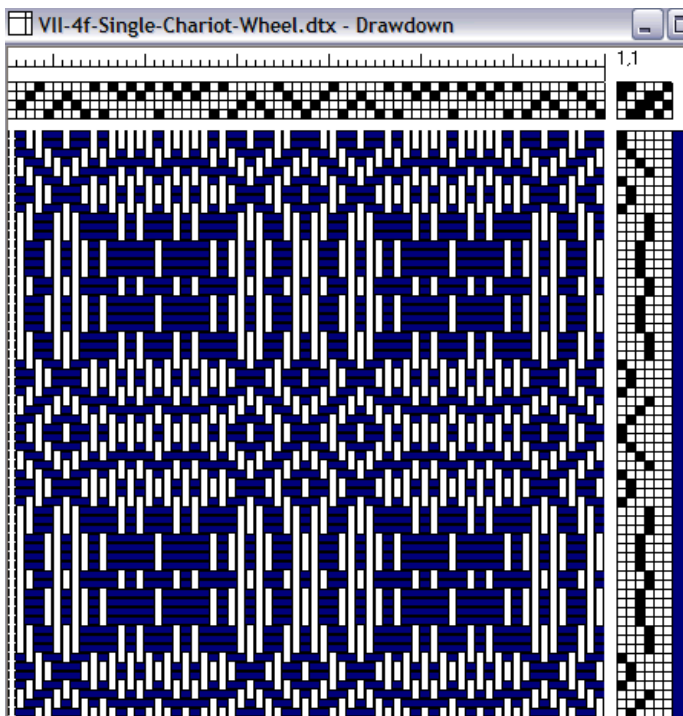
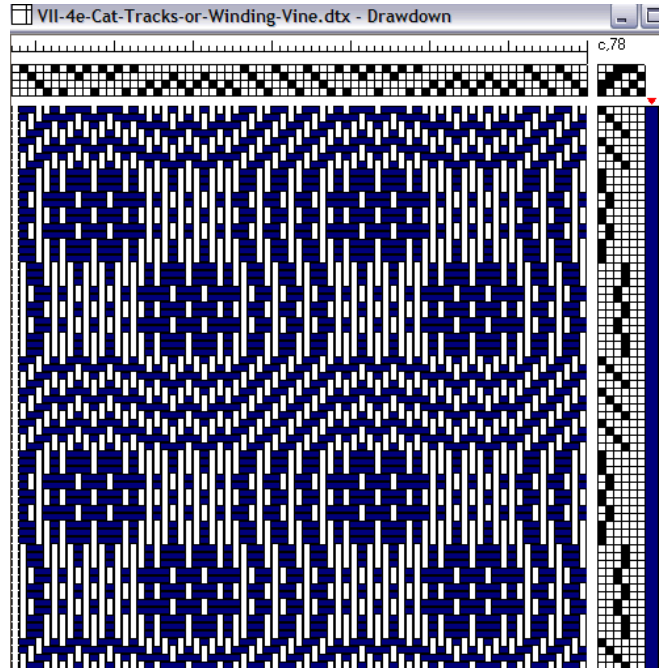
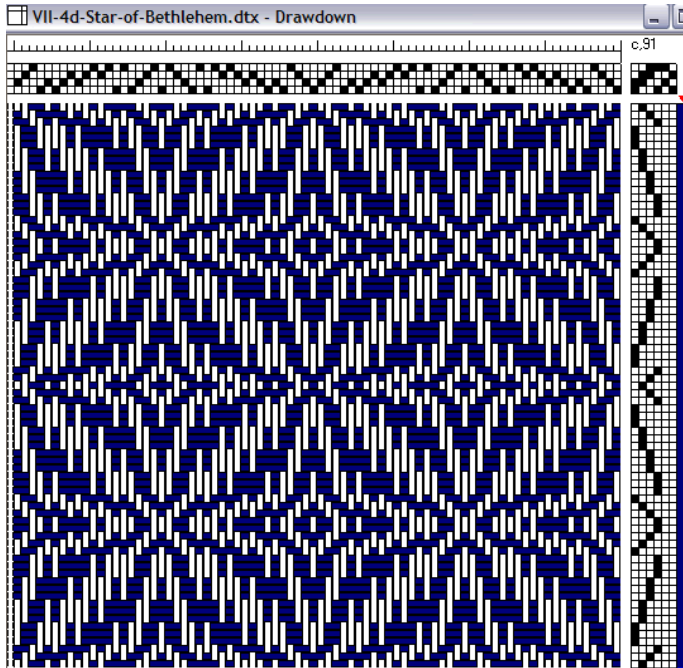
Recipe Book. A Group of "Miniature" Drafts
This is a collection of small overshot designs. They will work together to make an excellent gamp. Here shown with two repeats.



Drafts can also be woven rose fashion or one of the other treading variations. The draft on the right is Orange Peel woven rose fashion.

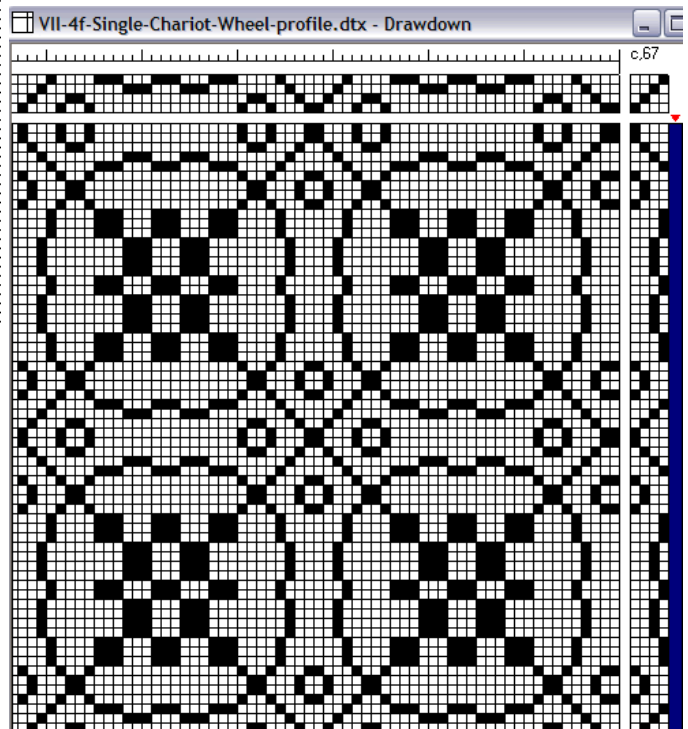


Mary Meigs Atwater, *Recipe Book*, Series VII, No. 4 . Shown on these two pages are 6 of the 10 drafts.



The tie-up has been changed on Single Chariot-Wheel. This would be the more traditional side.

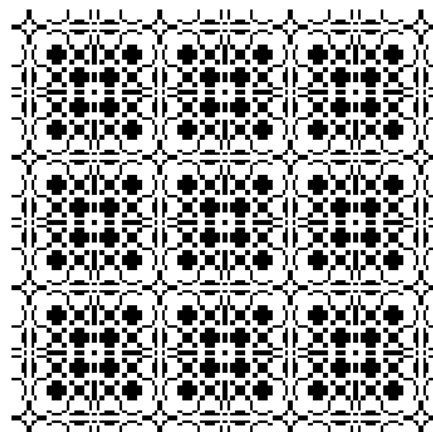
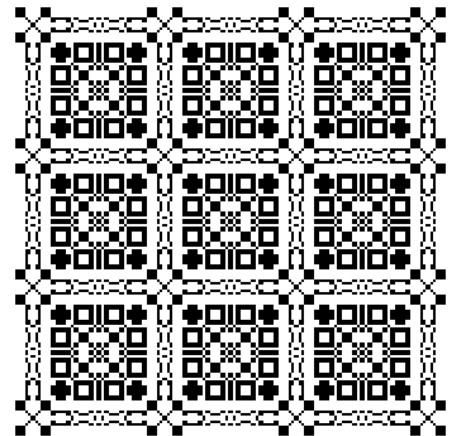
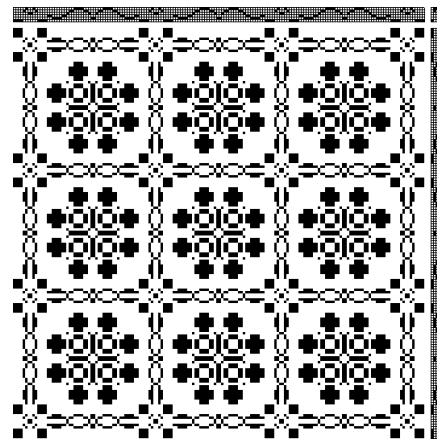
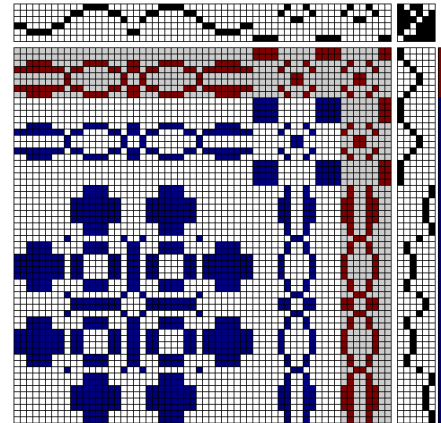
Using a traditional overshot draft, you can create a 4-block profile draft. There are several ways to do this. One quick method is to use the treadling as a guide for the profile blocks. If the draft is woven in star fashion (or tromp-as-writ) the treadling is the block order. Just copy it to the threading and change the tie-up to one block per treadle. See profile draft of Single Chariot-Wheel, below.



Mary Meigs Atwater Weavers Guild Calendar:

<p>20 September 2003 Saturday, 12:30—2:00 pm at the lodge at Soldier Hollow. Potluck lunch and Show and Tell.</p>
<p>19—21 September 2003 Soldier Hollow, www.mtnspirit.org Fri. 12-7 Sat. 9-7 Sun. 9-4. Mountain Spirit Heritage Festival: Our demo schedule is Friday, 4 – 7 pm, Saturday, 3 – 6 pm and Sunday 12 – 3 pm.</p>
<p>16 October 2003 7:00 pm Unitarian Church* Note: 3rd Thursday. Connie Denton: Coiling With Waxed Linen. Bring a spool of waxed linen or buy from Connie (approx. \$11)</p>
<p>13 November 2003 7:00 pm Unitarian Church* Julie Schwartz and Deanna Baugh: Ikat — hands on demo</p>
<p>11 December 2003 7:00 pm Unitarian Church* Christmas party – Pot luck Dinner, Gift exchange – bring a homemade gift</p>
<p>10 January 2004 9:00 am – 4:00 pm Saturday One Day Workshop Come help us celebrate Sharon Alderman's new book and spend the day with her. Understanding Weave Structures: Only \$25</p>
<p>12 February 2004 7:00 pm Unitarian Church* Charlene Lind: Overshot</p>
<p>11 March 2004 7:00 pm Unitarian Church* TBD</p>
<p>16 – 17 April 2004 Statewide meeting 18--20 April 2004 Workshop Tentative dates. Second choice is 23 – 27 April.</p>
<p>13 May 2004 TBD</p>
<p>June 2004 Saturday (12 or 19), Kathy's meadow Meeting/program Judie Eatough: Card Weaving</p>
<p>27 June - July 3 2004 Convergence in Denver We're planning a get-together of those attending.</p>
<p>TBD August 2004 Basket weaving at Julie's</p>
<p>September 2004 With sheep dog trials. A 1-day workshop is being planned.</p>
<p>*South Valley Unitarian 6876 South Highland Drive, (20th E), downstairs.</p>

Series I, No. 8 "Speck" Book Pattern #49
Starting with the original design, two additional designs are created by changing the tie-ups.



Contacts for Organizations, web links
IWC Rep: Sandra Sandberg sandberg@dixie.edu
IWC Rep: Peggy Neuber pegneuber@pcu.net
IWC: <http://www.sdc.org/iwc1999/>
Utah HGA Rep: Charlene Lind 375-7532
HGA: <http://www.weavespindye.org/>
Complex Weavers Rep: Charlene Lind
CW: <http://complex-weavers.org/>
Wasatch Woolpack Handspinners:
<http://members.tripod.com/woolpack/index.html>