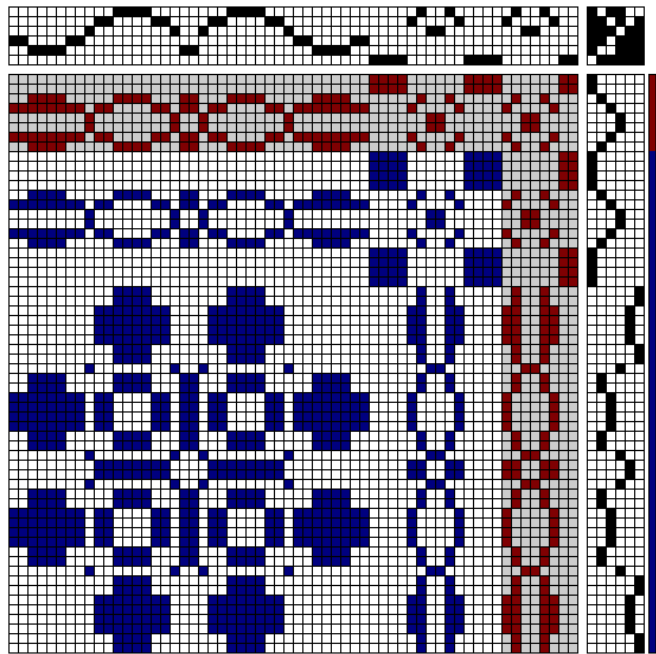


## Using the Recipe Book.

Example 1. Series I, No. 8  
 Recipe for a coverlet in Summer & Winter weave on 8 harnesses. Pattern from the ancient 'Speck' book of drawings in the Pennsylvania Museum of Fine Art.

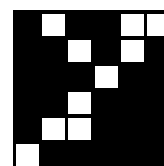
Items to note as you look at the page:

- The Recipe Book assumes you know how to weave the structures presented.
- Borders on the draft – 8 units
- Pattern is 52 units and 208 ends. This means each unit is 4 ends.
- The blanket is woven and seamed together down the middle.
- Sett and yarns. The warp is sett at 24epi, making the warp just over 42 inches wide. The tabby weft is a little bit smaller than the tabby warp.
- For the whole blanket, there are 8 repeats of the border on each side and 7 repeats of the main pattern.
- The profile has 6 units while the tie-up has 8 shafts. You need to know that the units for Summer & Winter are threaded, 1,P,2,P. Where P stands for one of the pattern shaft. If you have not woven Summer & Winter before, then you will need to read about the structure.
- The tie-up is a skeleton tie-up where either the x or the y treadle is added to a pattern treadle. A and B are the tabbies.
- The draft is woven as 'x's'. See the unit drawdown. The sample pictured is also woven as 'x's'.
- Summer & Winter can also be woven as 'o's', bricks, or columns.
- The order of the tabby makes a difference in the way the ground texture looks.
- The draft has radial symmetry, but the tie-up does not. If changed, then you can use the weave-as-drawn-in feature of most software.
- If you want to weave at a different sett and to weave a placemat or something smaller, you need to consider the number of ends in a repeat. A minimum of 52 units plus 14 units are needed to weave the pattern once with adding the extras to balance the draft. This is 264 ends. At 24 epi, that is 11 inches wide.

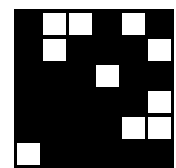


x	y	1	2	3	4	5	6	A	B
		8		8	8				8
		7	7		7		7		7
		6	6	6		6	6		6
		5	5		5	5	5		5
		4			4	4	4		4
			3	3	3	3	3		3
2								2	
	1								1

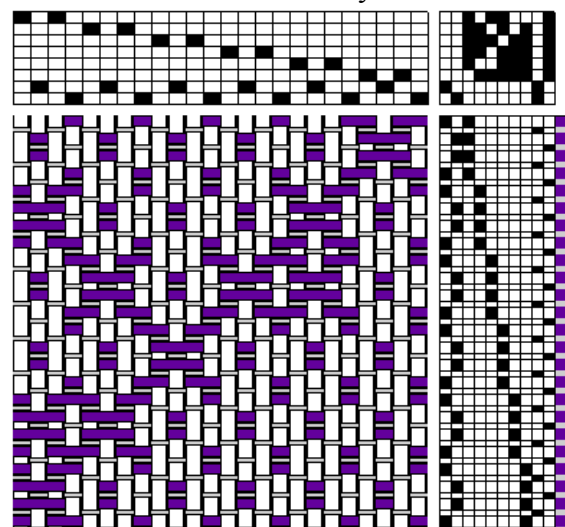
Old Tie-up



New Tie-up



Unit drawdown - with tabby.



Drawdown of Coverlet as suggested by Mary Meigs Atwater

