

Weavers' Bag

MMAWG Schedule for 2005-2006

By Susan Hainsworth

- November 10, 2005 Panel discussion about entering projects into regional and national shows.
- December 8, 2005 Holiday Party at Teri Jo Mauch's home
- January 12, 2006 Beth Myrer and Julie Schwartz on Shadow Weave.
- February 9, 2006. Scarf and Tea Towel Exchange and Mary Meig's Atwater Birthday Celebration.
- March , 17-18 2006 Statewide Meeting at Utah Cultural Center with Anita Louvera Mayer as our guest speaker and workshop leader. Workshop will be March 19—21, 2006
- April 13, 2006 Connie Denton and Robyn Kruppa will present Theo Moorman Weaving using rags.
- May 11, 2006. TBD
- June 17, 2006, Saturday at Kathy Wright's meadow in Park City. Steve Dayton will teach us how to dye basket materials with natural dyes and how to make a pie basket (a basket that's great for carrying a pie). We will also have a potluck lunch.
- July/August—no formal meeting. See full calendar for events
- September date is TBD for a 1 day workshop.

President's Message by Patti Pitts

Hi everyone,

This has been such a busy fall that I hope you are finding plenty of time for fiber and weaving! I was so excited by Michelle's presentation on folk shawls that I dug out the alpaca, needles and pattern that I purchased three years ago and started a sample for gauge. Of course, I'm also working on a project that I plan to enter for Convergence (I hope that all of you are thinking about doing this too) and I've finally got my warp on the loom for my scarf exchange!!! I actually think that I'm more excited about Mary's birthday party than I am about my own birthday...there are a couple of open spots in the exchanges if you're interested...let me know asap if you want to join either the scarf exchange or the towel exchange. Also, if you are aware of any former members out there, please let me know. We want to invite as many as we can find to Mary's birthday party.

I'm looking forward to the November meeting about entering shows. So many times in my life, I've discovered that things are not nearly as off-limits or frightening when I can talk to someone about their experiences in the same area. We have many



Patti with her effervescent smile!

great weavers in our guild and it would be so wonderful to see our guild well-represented at Convergence and at Intermountain Weaver's Conference. Please come prepared to be persuaded that you, too, can enter shows and show our weaving world what great weavers we have in the MMAWG!

ReNee Page is our guild's fiscal officer and she is looking for an assistant (Cont on page 2)

November Meeting by Susan Hainsworth



Our November meeting will be a panel discussion about entering projects into regional and national shows. This exciting presentation will feature three artists who

have years of experience with having their projects displayed in shows ReNee Page, Deanna Baugh, and Anne Carroll Gilmore. Each artist will bring some of the beautiful pieces she has entered into shows and discuss what she has learned about how best to prepare for and enter fiber pieces into shows. (Cont. on page 3)

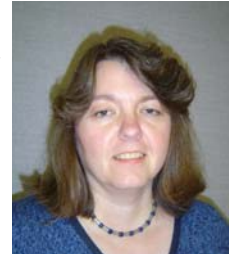
Treasurer's Report by Beth Myrer

Treasurer's report not received at time of print.



Secretarial Meeting Summary and Board Report by Dian Cheney

No report received at time of printing.



President's Message, Cont.

who is reliable and can meet deadlines. I quote ReNee, "They would not have much to do, but would be able to take over, if necessary. Which ain't going to happen-I hope." If you are interested in learning this job, contact me at the next meeting or by email or phone.

The board has been discussing having a guild sale/raffle. Barbara Cabrol told me about the sales that they have in the Sacramento Guild and since we have some things in the library that we no longer need, we thought that it might be fun to open it up to the entire membership. So while you're doing your fall cleaning (that is a nice ambition at my house!) and you find books, tools, fiber that you no longer want (or have room to store!), set it aside and this spring we will schedule a Jazzy Junque Jubilee. Details will follow in the next newsletter.

Mary Alice Huemoeller, who many of you met at the October meeting, is one of the artists involved in this show - Common Threads Textile Workshop and Show - November 14-17, 2005. This is a great opportunity in Jackson, WY at the Center for the Arts. Three artists, Bahkti Ziek, Myra Serins and Mary Alice Huemoeller will be presenting this work-

shop that will expose you to painted warps, braided discharge threads, warp and weft ikat and clamped and painted discharge methods. In addition, there will be a gallery show and a round table discussion and slide show. This is available to all levels of weavers, quilters and fiber enthusiasts for \$165.00 plus room and board.

These three artists met at Haystack in Maine and have collaborated to create this unique experience. Mary Alice will be at our November meeting and will have more information on shuttles to Jackson, places to stay and will answer any questions that you might have about this workshop.

See on November 10th...Patti

Common Threads Textile Show

Jackson, Wyoming

November 14-17.

Scarf and Towel Exchange

Many of you may not be aware of our scarf/towel exchange so I'd like to give you that info. The exchange will take place at our February, 2006 meeting. It will be in celebration of Mary Meigs Atwater's birthday. How fitting, wouldn't you say? The guidelines are as follows: 4 members in each exchange group. A blind drawing created the groups from those that have expressed an interest to participate. Groups will exchange either cotton towels or tencel or silk scarves

(maximum of \$30 per lb fiber cost).

Towels should be 15 to 20 inches wide by 24-30 inches long. Scarves should be 6 to 9 inches wide by 72-80 inches long. You make a scarf or towel for each person in your group including yourself if you want. You may also choose to make an additional scarf or towel that you can barter or sell at the exchange meeting. (Cont on page 4)



Wild and Wondrous Weavings in the Works by Sara Lee Neill

I have been having a busy time in the fiber world lately. My husband and I had an art booth at the Ogden Farmers and Art Market all summer, so I was busy knitting scarves, weaving tea towels, finishing the Inkle loom warp I'd put on at the Estes Park Wool Market in June, and weaving my first shawl on my triangle loom. It sold immediately! I then wove another triangle shawl in beautiful fall colors which got donated to the Ogden Nature Center's annual fundraiser, the BASH. There was a bidding war going on among three ladies. I was

happy when my sister-in-law won the final bid (perhaps I can borrow it some time). I always took my Inkle loom or spinning wheel or knitting project to the market with me. It was exciting to see the interest in what I was doing, especially with the men and children. Several of the artists from the market were invited to display items at a gallery called Art Stop for the month of September. I felt honored to have several woven and knitted pieces shown. I was
(cont on page 6—back page)

October Presentation Summary by Susan Hainsworth

At our October meeting, Michelle Poulin-Alfeld made clear that every woman really does need a shawl! We walked into a room where each chair was draped with its own beautiful, handknit shawl. We got to wear them during the meeting until it came time for Michelle to discuss each shawl. (We hope that she got home with as many shawls as she brought!) Michelle taught us how women in traditional cultures created shawls that stayed on their shoulders and were easy to wear in daily life. She showed us how women often created very complex looking shawls using patterns that were not difficult to create, thus making them easy to knit. She explained how some of the shawls were constructed and taught us what yarns and needles worked best for shawls. We learned that shawls have a wonderful history. They have been used by women for

centuries to warm themselves and to wrap their children. Michelle very generously shared her expertise, her beautiful knitting, and her love for the tradition and beauty of handknit shawls.

It was truly an inspiring.

Michelle—did you get all of your scrumptious shawls back? Several attendees said it was very hard to part with them.....

November Meeting, cont.

These artists have learned many helpful things over the years, and they have much to teach us. Patti, our Guild president, really wants us to focus this year on entering our wonderful work into such shows. Please bring any fiber pieces that you have had accepted into a regional or national show. Please also bring any fiber piece that has won an award at one of our Guild shows. We will display the items, and we can all soak up the inspiration!



Scarf and Towel Exchange, Cont.

Group One —Towels	Group Two —Towels
Open	Michelle Poulen Alfeld
Judie Eatough	Deanna Baugh
Diane Haueter	Maureen Wilson
Kathleen Higham	Rebecca Raybould
Group Three —Towels	Group Four —Towels
Julie Caldwell	Sara Lee Neill
Charlene Lind	Patti Pitts
Beth Myrer	Julie Schwartz
Open	Open
Group Five —Scarves	Group Six —Scarves
Julie Schwartz	Terri Jo Mauch
Patti Pitts	Julie Caldwell
Michelle Poulin-Alfeld	Judie Eatough
Group Seven - Scarves	
Susan Maturlo	
Sara Lee Neill	
Open	

Openings are still available for the scarf and towel groups. Anyone interested????

We need some volunteers help Timmie, our hospitality person, with the Guild Christmas party, including the turkey cooking/purchase, etc. in December. If anyone is interested, please contact Timmy Burton, (801- 582-3550).



Getting to know Mary Meigs Atwater

The following is an excerpt from a tribute to Mary Meigs Atwater presented by her daughter, Betty Atwater Biehl at the opening of the Mary Meigs Atwater Weaving Guild's Exhibit at the Utah Museum of Natural History, March 31, 1973. The total presentation can be found on our guild website. It is shared with you to help celebrate her birthday and the guild's birthday. Festivities will be at our February meeting.

.....Mother's connection with weaving seems, in retrospect, to be a matter of the right person at the right time. Before she ever saw a loom she was a trained artist and designer, skilled in drafting and interested in all sorts of mathematical puzzles.

From her childhood she was also interested in writing, and had written technical articles for my mining-engineer father as well as a good many short stories. (Cont. on page 5) She was skilled in many handicrafts, embroidery, knitting, sewing and braiding, and knew a good deal about the various types of fabric materials and their uses. She had lived in Paris as an art student, in Bolivia and Mexico with my father, and was acquainted with the art and textile museums in Boston, New



SOAR Market and Participant's Gallery

The SOAR market will be located in the ballrooms and lobby of The Grand Summit Hotel at the Canyon Resort. This year's market will feature 26 vendors from around the U. S. and Canada who sell spinning supplies including fibers, books, and equipment.

The market is open to the public and is free.

Public Hours:

Thursday November 10—10:00 am—4:00 pm

Friday, November 11—4:00 pm to 6:00 pm and 7:30 pm to



Soar Market and Participant Gallery

9:00 pm

Saturday, November 12—1:00 pm to 5:30 pm

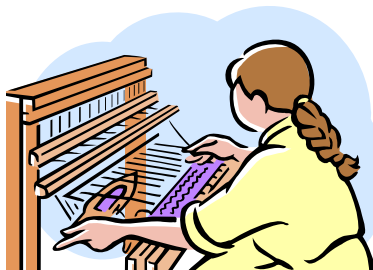
<http://www.interweave.com/spin/events/soar/market.asp>

Participants' Gallery will be open to the public at the same times. There is no charge during the public hours. Book signings Friday from 7:30—8:30 pm Nancy Bush, Charlene Abrams, Deb Menz and Sarah Swett.

Mary Meigs Atwater, cont.

York, Chicago and Philadelphia. Add to this an enthusiastically enquiring mind, and a willingness to undertake tedious research.

The weaving started in 1917, in Basin, Montana where my father was operating a mine, my brother was 12 years old and I was a baby. The world was suffering its first World War, and the women of the little mining town, whose men were working double shifts, needed something to occupy their



time and provide additional income. Mother had read about Berea, in Kentucky and she decided that a cottage industry was the answer, and weaving, then considered a lost art in the

United States except for the mountain women of Appalachia, should be the industry. She brought to Basin a teacher from the West Coast, a man who knew only simple four-harness over-shot but it was enough and the Shuttle Craft Guild was born.

(See our website for the complete talk.)

Warping with a Trapeze

WARP WITH A TRAPEZE AND DANCE WITH YOUR LOOM by Kati Reeder Meek is off the press and shipping. TRAPEZE is:

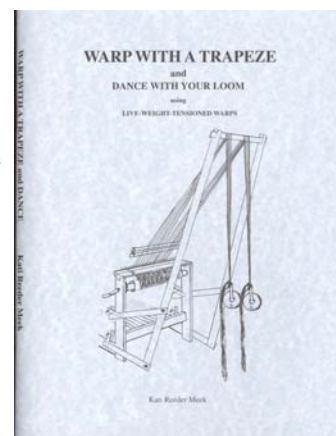
8 1/2 x 11 inches, 48 pages, black & white, saddle-stitched, 171 photographs, 7 diagrams, high-quality opaque paper.

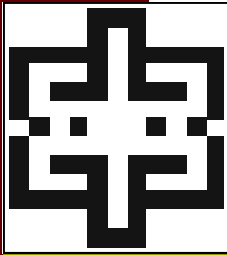
The list price is 19.95 plus s/h (\$4.00 to US).

If you are interested in ordering a copy, please see Terri Jo at

the next meeting (or email her). If we have 10 orders we get one free for our library.

Hot off the press!





WEAVER'S BAG—NEWSLETTER FOR MARY MEIGS ATWATER
WEAVERS GUILD

Mary Meigs Atwater Weavers Guild

Julie Schwartz, editor
1568 S. Red Filly Rd.
Heber, Utah 84032

Phone: 435-654-0746
Fax: 435-654-0746 (call ahead)
E-mail: jdschwartz@aol.com

WWW.MMAWG.org

2005-2006 MMAWG Board

President: Patti Pitts, 801-582-0271, utweaver@comcast.net

Vice President: Susan Hainsworth, 801-292-1169, shainworth@networld.com

Secretary: Dian Cheney, 801-250-4087, scheney152@aol.com

Treasurer: Beth Myrer, 801-373-3840, betsyboo100@hotmail.com

1407 W. 1100 N., Provo, UT, 84604.

Grants: Deanna Baugh, 801-966-3642, num1weaver@hotmail.com

Rebecca Raybould, 801-272-1344, peterbould@msn.com

Past President: Julie Schwartz, 435-654-0746, jdschwartz@aol.com

Appointed Board members/Committee Chairs

Principle Agent: ReNee Page, 801-942-6548, theloomer@msn.com

Hospitality: Timmy Burton, 801-582-3550

Library: Karna Petuskey, 801-582-8522, karnaP@aol.com

Equipment: Sara Lee Neill, 801-829-3703, slneill@xmission.com

Newsletter: Julie Schwartz, 435-654-0746, jdschwartz@aol.com

1568 S. Red Filly Rd., Heber, UT, 84032.

Website: Judie Eatough, 801-375-5535, judie@eatough.net

2006 Statewide Meeting: Julie Schwartz, 435-654-0746, jdschwartz@aol.com

2007 Guild Show: Charlene Lind, 801-375-7532, clind@juno.com

2008 COE Weaving: Judie Eatough, 801-375-5535, judie@eatough.net

Charlene Lind, 801-375-7532, clind@juno.com

To join guild: \$30 to treasurer

To join guild webpage: MMAWG-subscribe@yahoogroups.com

Guild Meetings: 2nd Thursday of the month

Unitarian Church, 6876 S. Highland Dr (2000 E.).

Wild and Wondrous Weavings in the Works by Sara Lee Neill (Cont.)

then invited to do a weaving demonstrating at the Union Station on the opening night of the Ogden Arts Festival. A fellow market friend brought her spinning wheel and angora rabbit, so we had quite a draw to our area. We really do need some flyers about our guild to hand out to interested people.

I don't know if any of you heard about a recent four day conference in Ogden called Women Create. They offered over 150 different fiber/craft classes. I took two beaded jewelry classes and created a lovely necklace from silk cording, pearls and semiprecious stones and also a bracelet made from silver wire, pearls and stones. They plan on having this conference every fall, so keep you calendar open. I am now working on a knitted silk evening bag and a purse constructed from a felted thrift store sweater, embellished with felted fall leaves and beads. The baby wolf is keeping my iridescent warp safe and sound, the floor loom is ready to receive a chenille warp for a scarf and my triangle loom has the beginnings of a shawl on it. It amazes me how I ever have time to go to work each day!

FYI: I am the newly appointed IWC representative for Utah. Check with me regarding information on becoming a member of IWC.