

The Weaver's Bag

Mary Meigs Atwater Weaver's Guild of Utah • February 2016 • Vol. 62 No. 2

February Guild Meeting

What: Band Weaving: Pick-Up on Inkle Weaving and Card Weaving, by Jo Stolhand and Juliette Lanvers

When: Thursday, February 11, 2016, 6:30 p.m.

Where: South Valley Unitarian Church, 6876 South Highland Drive



Our February meeting will be about band weaving – narrow weaving that can be done on smaller and more portable equipment – and will be presented by Jo Stolhand and Juliette Lanvers. Jo will be showing us card or tablet weaving. She has been making some very interesting brocade bands using pick-up and card weaving. There are all kinds of uses for these very strong bands. Juliette will be showing patterned inkle bands. These are traditionally woven on a small rigid heddle loom, but they are easy to weave on an inkle loom. These bands are made with a simple pick-up technique to give wonderful patterned bands. Both of these techniques can be done on the most minimal of equipment, often backstrap-type looms.

Latvian band

Jo Stolhand and Juliette Lanvers are both members of our Guild. Juliette's exquisite patterned band won the judges' choice award at our last Guild show. Jo is an excellent weaver who is interested in traditional weaving techniques. You won't want to miss a meeting presented by these two wonderful weavers. ☀*Deanna Baugh*

President's Message

Last night I had the pleasure of joining the St. George "Branch" Guild group for the evening. Nancy Crowley is doing a great job of pulling weavers in the St. George area together to share and learn. The program last night was "Tips and Tricks." and everyone was invited to bring favorite weaving tools and to share some of their favorite "tricks" that they have learned. Since it is a small group (8 were there), there was time and interest for all to share. It was a fun evening, and it always amazes me how many different ways we all come up with to make warping, sleying, and weaving work for us! Weaving is such a challenging and creative process! And Weavers are so fun and inspiring to be around!

I would like to encourage everyone to sign up early for the Fiber Festival! Remember, if you register before February 11th you get a \$10 discount! There are also still some openings for the Robyn Spady workshop, so join us! Program and registration materials are both available on our website and links to them will be in this month's bulletin. Happy Weaving! ☀️ *Mimi Rhodes*

2015–2016 Weaving Exchange: Christmas Ornaments



One of your New Year's resolutions can be to continue the Christmas spirit into the new year. Our Guild's weaving exchange this year will focus on Christmas ornaments. The exchange will be during the last meeting of the year—in June—so we will have Christmas in June! If you make five ornaments, you can exchange for five. If you make three ornaments, then you will get three back. The goal is to see how creative you can be and how much fun we can have. Please start thinking

now about any type of fun fiber-y Christmas ornament you can make. It can be made with weaving, knitting, basketry, etc. We look forward to seeing all the inspiring ornaments that you create. They will inspire all of us for the Christmas season of 2016.

☀️ *Jeanette Tregeagle*

Summary of January 14 Guild Meeting



SHOW AND TELL

Mimi: Christmas table runner in green with a sparkling red thread, plus a matching towel. Mimi explained how she had adapted the draft to weave a large square cloth with fringes in all sides.

Eileen B: overshot towels in blue and white snail's trails and cats paw pattern. Overshot in linen with cotton weft and warp.

Juliette L: a stash buster shawl in soft blue, green, and brown.

Catharine M: Red twill table runner; HGA specially dyed yarns plus HGA membership forms and some copies of the HGA publication *Shuttle, Spindle and Dye*.

Beth M: felted cloche hat inspired by Phryne Fisher Mystery series.

Jeanette T: rep sample in green and gold from Rosalie Neilson's workshop in November.

Jane R: hooded scarf in Leno lace weave.

MIMI OPENED THE MEETING

Robyn Spady Workshop: Sonya explained that several weave structures are to be woven during the workshop. About 15 threadings are listed in the workshop material on the website. Participants should pick one and let Sonya know. The workshop can accommodate between 20 and 24 and places are still available. A projected price will be available towards the end of February.

Fiber Festival: Sonya announced a special offer available until the Guild meeting in February of \$60 to include participation in all Fiber Festival events plus all meals. This offer would encompass the dinner on Friday, April 1, and talk by Robyn Spady; the morning session on Saturday, April 2, with Robyn followed by a box lunch; the afternoon workshops; and the Jazzy Junk Jubilee. After February 11, the price will be \$70.



Jazzy Junk Jubilee: Priced items can be offered for sale at this Fiber Festival event. 20 percent of the sale price will go to the Guild. Items can also be donated for sale to benefit the Guild.

Betty Fingl's Estate: Mimi notified the meeting of a \$5000 endowment to be used towards reducing members' costs in attending workshops. ReNee Page, Charlene Lind, Deanna Baugh and Judie Eatough all shared memories of Betty Fingl, describing her as a precise, careful weaver who did a lot for the Guild, including the securing of funding and grants, as well as inspiring others in their weaving efforts.

PRESENTATION

Deanna began her presentation by explaining how weave structures have been classified in various different ways by different people. She provided a handout detailing Harriet Tidball's classification system of two classes: Loom-controlled and Weaver-controlled weaves. To go with the handout, Deanna brought a large collection of samples of most of the weave structures listed in the Tidball classification. After her explanation, members were able to examine the samples and ask questions. ☀Jane Roos

Fiber Fair 2016

Our Guild's Fiber Fair is coming up in April 2016! For those not familiar with the Fiber Fair, it is a two-day event. On Friday night, Robyn Spady will give an inspirational and no-doubt entertaining speech! This talk will be accompanied by a catered dinner. Saturday will be a full day of morning and afternoon workshops. There will be one main workshop in the morning taught by Robyn and a catered lunch, followed by several small group seminars. Other teachers in addition to Robyn will be announced in the near future.

Save the dates: The Fiber Fair will be held on Friday, April 1, and Saturday, April 2, at the Utah Cultural Celebration Center! We are very excited to have our fair there. It is a lovely place.



Sample of Robyn's weaving

The sign-up information for the Fiber Fair is available on the MMAWG yahoo groups list and the website. The price of the Fiber Fair will be discounted through the February meeting; then it will return to the full price.

To get to know Robyn, check out her website and her blog. Both are very much worth reading, and Robyn is funny as well as a wonderful weaver!

<http://spadystudios.com/>

<https://spadystudios.wordpress.com/> ☀Sonya Campana, Fiber Festival Chair

Spring Workshop with Robyn Spady

From March 30 to April 1, at the Utah Cultural Celebration Center, our Guild will be sponsoring Robyn Spady to teach a workshop titled "Pictures, Piles, and Perplexing Curiosities."

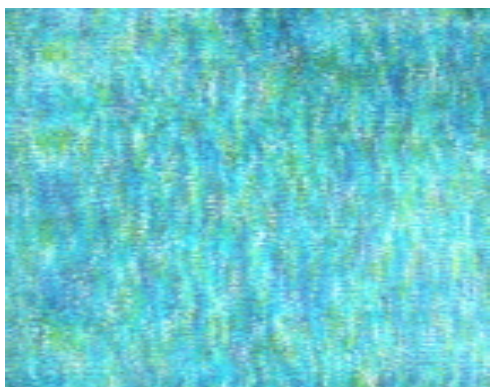
This is a workshop designed for intermediate-to-advanced weavers (and adventure-seeking beginners) who want to learn new weave structures. In this round-robin workshop, participants will expand their knowledge and experience in weave structures they may have heard of but, may not have woven—a surefire weaving adventure and challenging journey of warp and weft. Structures covered include multi-block swivel and bead leno, corduroy, velvet, samitum, corkscrew twills, lampas and Beiderwand. This workshop is a combination of four-to-eight shaft looms.

At this time, a deposit of \$50.00 will secure your space for this amazing workshop. There is a sign up form for this workshop on the Guild's website.



A little more information about Robyn: Weaving has always been a part of my life. It started with my baby blanket handwoven by my great-grandmother. While growing up, it helped instill in me a sense of creativity and confidence at a time when my self-esteem was developing. During my years while working, in what I like to call "Corporate America," weaving helped give me sanity and feel a sense of productivity, which was very important while working on long-term projects when day-to-day progress was not evident.

In 2001, changes in my life provided me the opportunity to dedicate myself to weaving full time. One of the earliest undertakings, which has had a huge impact on my life and my weaving, was tackling the Handweavers Guild of America's (HGA) Certificate of Excellence in Handweaving (COE-W). In October 2002, I successfully completed Level II: Master in Handweaving with the specialized study Loom-controlled Stitched Double Cloth.



Velvet Cloth Woven by Robyn Spady

I am fascinated by the infinite possibilities of crossing threads and love coming up with new ideas to create fabric and transform it into something that has never existed before. My intrigue with stitched double cloth encouraged me to explore the many ways to weave double-faced fabrics as a way to create versatile fabrics that are reversible, self-lined, etc. In addition to double-faced fabrics, I love to discover uncommon and unusual weave structures, especially if they can be woven on only four-shafts. Recently, I've also been studying how elaborate trims can be woven on narrow warp weaves.

For many of us, weaving is a type of circle of life. The loom my great-grandmother used to weave my baby blanket on over 45 years ago is in use on a daily basis helping me transfer my inspirations into new fabrics and inspiring new generations of weavers. ☺ *Sonya Campana and Karan Swanger, 2016 Spring Workshop and Fiber Festival Chairwomen*

February Meeting of the Southwest Utah Branch of the MMAWG

The Southwest Utah Branch of the Mary Atwater Weaver's Guild met on February 1 to discuss "tips, tools, and looms." Members discussed their favorite weaving tips, favorite weaving tools, and the types and brands of looms that have worked best for them. The March meeting, to be held on March 7, will be a trip to see the textiles at the Human History Museum at Zion National Park.

Guild member Sarah Horton is an archaeologist and the Cultural Resource Manager at the park. She will take participants through the museum collection, focusing on objects associated with weaving and weaving technology from prehistoric era contexts and more recent historic era contexts. Prehistoric era includes Ancestral Native American (i.e., Anasazi) objects such as cordage, both from vegetal and faunal materials, basketry items associated with food processing and clothing, woven cloth fragments, and hand tools associated with weaving. Historic era includes Ethnographic objects associated with the Southern Paiute, which is mostly fine basketry and beadwork. Other historic era objects are from non-native sources, such as woven/wicker furnishings.

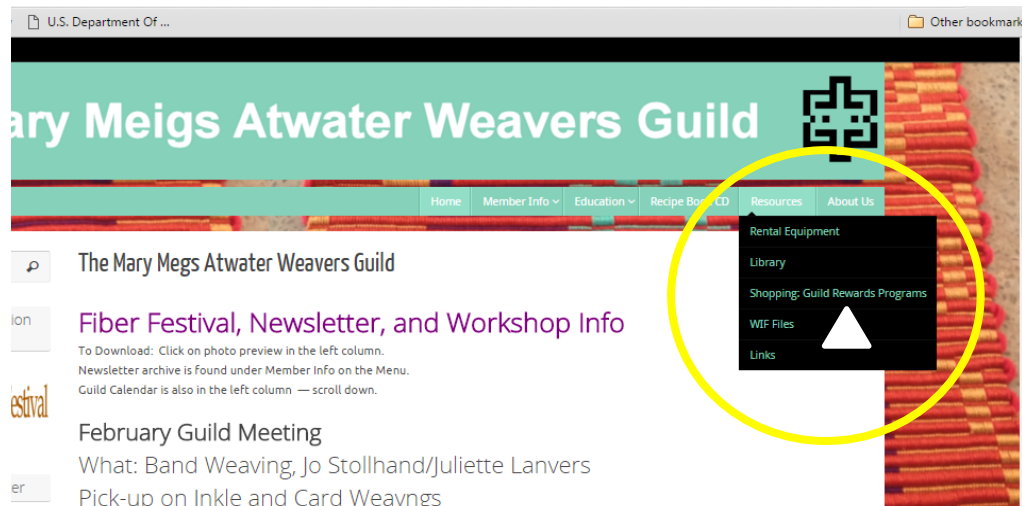


Mimi Rodes visited this meeting and shared information about the upcoming Fiber Fair. She also gave the Guild some duplicate books that were in the MMAWG library, to be added to the library of the Southwest Branch of the Guild.

P.S. If anyone is interested in visiting this museum, here is the website:
nps.gov/zion/learn/historyculture/zion-human-history-museum.htm ✨Nancy Crowley

Participating Guild Status at the Woolery and Halcyon Yarns


As Mimi has mentioned, the Mary Meigs Atwater Weaver's Guild has become a participating Guild with both the Woolery in Frankfort, Kentucky, and Halcyon Yarns in Bath, Maine. This means that if you order supplies from these vendors as a member of the Guild, we will receive a percentage of the sales. To do this, go to our Guild website at www.mmawg.org, and click on the Resources tab in the upper left. The drop-down menu includes the shopping: Guild Rewards Program, as shown below.



Click on the link that is provided, and on the next page, you will see instructions on how to take advantage of the rewards program, as shown below:

Woolery Guild Rewards Program

Click on link below for shopping at the Woolery. The guild will receive a percentage of all sales once a year.



Woolery
Your Fiber Arts Supplier Since 1987
SPINNING • KNITTING
WEAVING • RUG HOOKING
SHOP >

Halcyon Yarn Guild Rewards Program

<https://halcyonyarn.com>

Guild Rewards program – up to 5% back for your guild!

Guilds apply for and are accepted as members of the Halcyon Yarn Guild Rewards program. When placing orders at Halcyon Yarn (which we hope you'll do often!) individual members of an enrolled guild identify themselves as a member of that particular guild and are matched up in our system. At the end of each calendar year Halcyon Yarn totals up the individual member purchases for each guild and sends that guild a check for 5% of those sales.

How do I participate?

Check if your guild is listed. If not, work with your guild to [apply to participate](#).

- If your guild is listed, earn rewards by:
 - Making a note of your guild in the "comments" box for web orders
 - Mention guild over the phone
 - Mention guild in store
- Don't want to remember to note your guild?
 - **Quick solution:** click a guild to set a "cookie" in your browser so that your order will automatically be noted with your guild
 - **Better solution:** If you are signed into a Halcyon Yarn [web user account](#), and you click a guild link, that guild will remain associated with your account whenever you log in!

Participating Guilds

Are you part of a guild? Select your guild to earn rewards for it:

- Mary Meigs Atwater Weavers Guild of Utah

The Shuttle-Craft Bulletins Study Group, March 2016

THE SHUTTLE-CRAFT GUILD BULLETIN



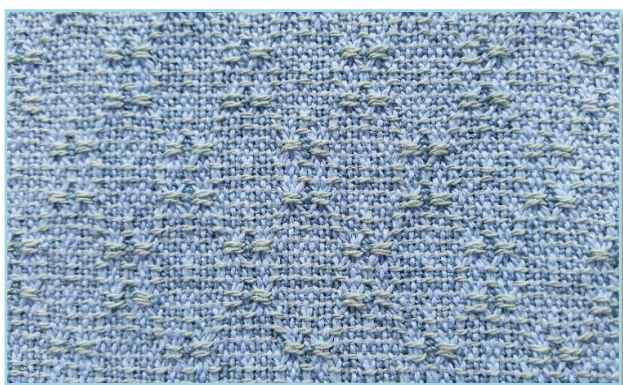
The Shuttle-Craft Bulletins study group meets to discuss Mary Atwater's work as described in the Shuttle-Craft Bulletins. We meet every other month at one of the study group member's homes, discuss the topic, and share samples and experiences. The meetings start with a section from Mary Meigs Atwater's biography. The topics,

Bulletins, and meeting dates for the next year are as follows:

Topic	Bulletins	Meeting Date
Baby Blankets	March 1925, May 1949	January 2016
Bronson Weave	April and May 1925	March 2016
Twill	June 1925, April 1929	May 2016
Philippine Bag	July 1925, September 1936	July 2016
Dress Fabric	August 1925, June 1944	September 2016

The next meeting of the Shuttle-Craft Study group is scheduled for March 15, 2016, 7:00 p.m. at Maureen Wilson's home. The topic of discussion will be the Bronson Weave, from the April and May, 1925 issues. These will be emailed out in advance of the meeting. If you are interested in joining the discussion, please let Maureen Wilson (maureenmwilson@yahoo.com) know. Directions to Maureen's house: 1883 Texas St. (2380 East), Salt Lake City.

From I-15, take the 2100 South exit, heading east to 2300 East, turn left (north) and take the 2nd right (east) on Redondo Street (1980 South) take the 2nd left (north) on Texas St. My house is the 2nd to the last house on the right (east) side of the street. It is red brick with light green house numbers on the front and a fire hydrant in the parking strip.



From 215, Eastbound, take the Parley's Way exit (exit 1), head west on Parley's Way to 2300 South, there is a Rite Aid drugstore and McDonald's on the right, turn right (North) and take the 2nd right (east) on Redondo Street (1980 South) take the 2nd left (north) on Texas St. My house is the 2nd to the last house on the right (east) side of the street. It is red brick with light green house numbers on the front and a fire hydrant in the parking strip.

The next meeting will be in May 2016, and details will be in the next newsletter. ☀Maureen Wilson

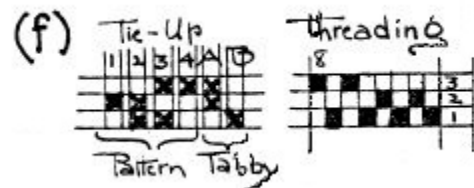
Shuttlecraft Bulletins: Weaving Rugs, Wool Chenille or Tufted

This month, I'm writing about what Mary Meigs Atwater has to say on rug weaving, particularly wool chenille rugs and tufted rugs. The topic is taken from the December 1927 and May 1928 Bulletins.

In 1927 Mary discussed wool chenille for rug weaving, a material that "makes a very excellent and serviceable heavy rug." A substitute for this today might be the popular Pendleton wool selvages. These rugs are especially good for small rugs in hallways and doorways where the traffic wear is high. She recommends 5 lbs of material, woven plain weave, without a tabby. Adding a tabby in carpet warp will decrease

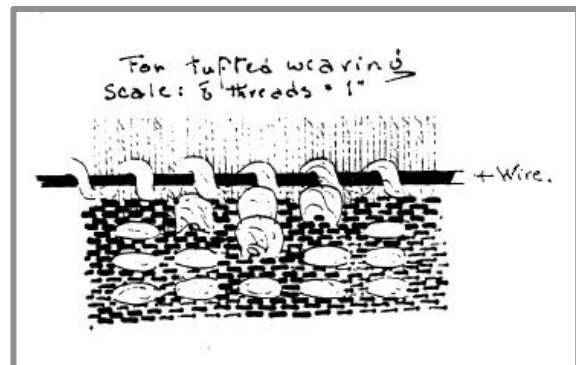


the weft material required. Mary identified a heavy carpet warp set at 12 ends/inch, doubled, as the best setting for rugs in plainweave. ReNee Page says that is her favorite sett. Other weaves recommended for wool chenille is Summer and Winter, with a sett of 15 epi, doubled, or in what Mary calls the three-harness weave. She recommends weaving a border at each end in one color and the "ground" in another. Some color combinations listed are: borders of black, orange and tan, with a brown ground; black, brown, orange and tan borders with a blue ground; black, blue borders and a vivid green ground.



Three Harness weave

In 1928, Mary examined a Spanish tufted weave piece done in 2 or 3 colors. She called the "foundation" linen and the weft a heavy wool, done in red and black, or in yellow, red and black. The weave is not complicated, but it is time consuming. The warp, if fine, should be set at 30 epi, if coarse, at a more open sett. She recommends starting with several tabby shots (4-6), then open a shed for tufting, and throw a shot of all colors to be used in the same shed and pick up on a wire (knitting needle or crochet hook) loops of the color you desire for the design. Weave 4 tabby shots and repeat. Or you can weave solid tufting, to get an effect to resemble a hooked rug. If you use fine materials, the resulting fabric may work well for a bag.

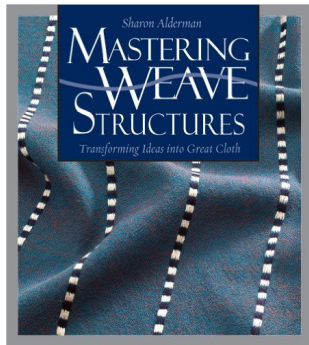


The pattern woven on the pieces that Mary saw were done in a series of narrow borders of different colors around a large central figure. She calls the technique as one that would lend itself to rugs and other textiles in a free "modernistic" design. Mary says in 1928: "We are here in an entirely new world that will, I am sure, prove fascinating and exciting to many of our more expert designers."

To see how to weave pile, search You-tube videos at this link: <https://www.youtube.com/>. Syne Mitchell demonstrates pile weaving with a knitting needle and crochet hook for a linen spa washcloth on a rigid heddle loom, and there is a video on weaving a pile towel by Rigidheddleweaving.com, also on a rigid heddle loom.

Notices

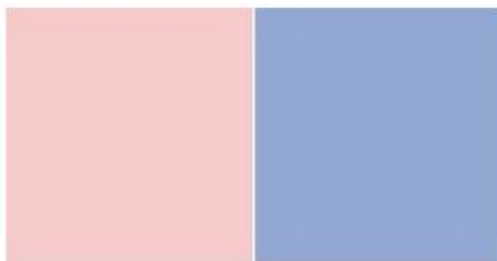
Upcoming Show at Phillips Gallery



Sharon Alderman, local handweaver, artist, teacher, writer and author, is a participating artist in an upcoming show at the Phillips Gallery, 444 East 200 South, Salt Lake City. There will be an Opening Reception, February 19, 6:00 p.m. to 9:00 p.m., during the February Gallery Stroll.

Pantone Colors of the Year (2016)

Pantone, Inc., authority on color, provider of color systems and leading technology for accurate communication of color, has released the color (or colors) of the year, 2016. In their words: "It is a symbolic color selection; a color snapshot of what we see taking place in our culture that serves as an expression of a mood and an attitude.



ROSE QUARTZ
PANTONE 13-1520

SERENITY
PANTONE 15-3919

For the first time Pantone introduces two shades, Rose Quartz and Serenity as the PANTONE Color of the Year 2016. Rose Quartz is a persuasive yet gentle tone that conveys compassion and a sense

of composure. Serenity is weightless and airy, like the expanse of the blue sky above us, bringing feelings of respite and relaxation even in turbulent times."

Mary Meigs Atwater
Weaver's Guild of Utah

December 2015 • Vol. 61 No. 12

Newsletter editors:

Susan Hainsworth, susanhainsworth@gmail.com;
Maureen Wilson, maureenmwilson@yahoo.com

The newsletter is published 10 times a year.
Any articles or information should be to the editor by the 5th of the month.

To join the Guild send \$30.00 (\$35.00 to receive the newsletter by mail) to Jo Stolhand, 264 Williams Avenue, SLC, UT 84111

To join the Guild e-mail list:
MMAWG-subscribe@yahoogroups.com

Guild website: www.mmawg.org

Guild meetings are generally held the 2nd Thursday of the month at the Unitarian Church 6876 South Highland Drive (2000 East)

2015–2016 MMAWG Board

President: Mimi Rodas, 801-619-6888, mimirodes@comcast.net

Vice Presidents: Deanna Baugh, 801-966-3642, num1weaver@gmail.com. Margarethe Lauer, 1-772-321-1105, nordicsnow@hotmail.com

Secretary: Jane Roos, 801-572-9997, gracey1849@yahoo.com

Treasurer: Jo Stolhand, 801-521-0069, jstolhand@q.com

Hospitality: Ping Chang, 801-545-0512, wanping801@gmail.com

Librarian and Equipment Contact: Sonya Campana, 801-733-5888, sonyacampana@gmail.com

Grants Officer: Jeanette Tregeagle, knitweave@yahoo.com, 801-568-9645

Newsletter: Susan Hainsworth, 801-292-1169, susanhainsworth@gmail.com;
Maureen Wilson, 801-485-5241, maureenmwilson@yahoo.com

Website: Judie Eatough, 801-375-5535, judie@eatough.net

HGA representative: Jill Dahle, 801-446-5581, pjdahle@msn.com

Guild Calendar

2015–2016

February 11, 2016

Band Weaving:

Pickup on Inkle Weaving and Card Weaving
by Jo Stolhand and Juliette Lanvers

March 10, 2016

Designing Rag Rugs

by ReNee Page and Susan Hainsworth

March 29–April 1, 2016

Three-Day Workshop with Robyn Spady

April 1–2, 2016

Guild Fiber Festival, with Robyn Spady

May 12, 2016

Weaving Families in the Americas,
by Karen Elrod

June 2016