



The Weaver's Bag

Mary Meigs Atwater Weaver's Guild of Utah • June 2016 • Vol. 62 No. 6

June Guild Meeting

What: Navajo Rugs and Potluck Lunch at Catherine Marchant's Home

When: Saturday, June 11, beginning at 11:00 a.m.

Where: 554 Lakeview Drive, Alpine, UT 84004 (directions below)



This rug is Catherine's most recent acquisition. Each figure is wrapped in a different blanket.

For our June meeting, we have the privilege of visiting Catherine Marchant's home. Catherine moved into our Guild last year, and we are so happy to have her! She currently serves as the president of the board of Handweavers' Guild of America. We will meet at Catherine's home at 11:00. During our visit, we will:

1. See the wonderful collection of Navajo rugs owned by Catherine and her husband, Sherm Myers. Sherm has a presentation about Navajo rugs that he will share with us.
2. Enjoy a potluck lunch. Be sure to bring a dish to share. The Guild will provide drinks.
3. See the Christmas ornaments that Guild members have made for the Guild weaving exchange. If you participated in the exchange, please bring your items (see the article in this newsletter).
4. Spend time looking at all the things you bring for show and tell! Please bring whatever you have been working on.

Directions to Catherine's home, 554 Lakeview Drive, Alpine, UT 84004

To get to her home, from I-15 take exit 284, the Highland/ Alpine exit. Drive east on the Timpanogos Highway. Turn left (north) on 6000 West. (This is the light following Smith's Marketplace.) Drive north until you can't go any farther. Turn right. This road becomes Westfield Road. Drive east until you can't go any farther. Turn left. This road changes names from 200 N to 400 W to Eagleview. Drive north until you can't go any farther. Turn left. This is Lakeview. Her house is 554, the second on the right.

The driveway is somewhat steep, and there is room for a couple of cars at the top. It would be best to leave room at the top for those who have mobility issues. If you have any questions about getting to Catharine's home, you can call her at 1-908-803-9667.

Getting to know Catherine Marchant

Catherine lived in Salt Lake City years ago and took a knitting class from Nancy Bush, who owned the Wooly West. Nancy also sponsored a spinning class, which Catherine took and became hooked on spinning. She and her family then moved to the "sticks" in Texas, where there were a few weavers and spinners. One of them taught weaving at the Community College, and Catherine took a class in 1985 and became a weaver.

The family then moved to New Jersey, where there was a small Guild. Two women who lived near her became her "weaving mamas". She took her infant daughter each week to visit these women and talked fiber. Catherine was active in the New Jersey Weaver's Guild for a long time. She started the Guild calendars (she brought some to show us) in that Guild. She sent one to HGA and was asked to write an article about the calendar. This led to an invitation to write an ongoing column for HGA about Guilds. She wrote one about our Guild! She came to Salt Lake and visited ReNee Page. She also wrote an article about the curriculum of a former Guild member, Pam Bold, for special interest students based on weaving.

Catherine gradually got better at spinning and weaving. She did a spinning certificate program that the Ontario Handspinners offers – a Canadian version of the COE. She went to Canada for 10 days every summer for six years and then sent in homework during the summer. She credits this program for helping her to survive breast cancer treatment! She received the certificate in spinning and in the process learned much from very good teachers.

Catherine has two children. When her daughter went to college, she was able to throw herself into her weaving. She became involved in a co-op gallery and marketed her weaving. She moved to Utah last year, where she and her husband found a lot with incredible views in Alpine and built a home – with a lovely studio.

When Catherine attended Convergence in Tampa in 2006, she took a workshop, where her table mate was a member of the HGA board in charge of fundraising who was leaving the board and looking for a replacement. Catherine was appointed to this position and has been on the board since. Last year she became the president of the board and will conclude her HGA service after this summer's Convergence. We are so happy to have her in our Guild and so grateful for all that she is doing! We look forward to getting to know her better by seeing her home and studio.

President's Message



Dear All: I am so very much looking forward to our June meeting and the opportunity to view the collection of Navajo weavings owned by Catherine Marchant and her husband, Sherm Myers. They are so kind to invite us to their home. And — of course! — a MMAWG Guild potluck is always a fun and rich eating experience! Having been away for both the April and May meetings, I can't wait to touch bases with everyone and find out what you all been creating!



I would also like to thank Judie for putting together the nominations for next year's board. We will be voting on the nominations at the June meeting.

As I write this message — Lee and I have been spending a wonderful week in Santa Fe, NM, visiting galleries and workshops here in the area. I marvel at the skill and patience required to make some of the beautiful Navajo and Spanish style rugs and blankets we have seen. I had some lovely and interesting visits with several weavers in their Chimayo workshops. At one of the galleries I saw a display of "Memory Figures" by the artist, Ron Allen. As I drew closer, I started to laugh and I knew I just HAD to share them with you! I apologize for the poor group photo — the light was wrong. But when you look at the close-up photo of the skirts you will see all kinds of "memory" objects — spools of threads, plastic jewelry, pieces of measuring tape, etc. — and why I had to laugh!!! I am sure I could open my drawers and come up with enough memory objects to make a number of skirts!!!!

I have also seen a number of gorgeous, colorful velour and silk/rayon or bamboo shawls, wraps, and "cocoon" jackets. (At gorgeous prices, of course.) I am so inspired by the creativity and rich use of colors by these artists. Can't wait to try working with some of those beautiful fibers!

We opened registration for the Anita Mayer workshop (November 3-5) at the May meeting and we already have 14 registered! That means we still have 6 slots left, so be sure to register soon. The workshop information and registration form are at the end of this newsletter. Copies are also on our website. It is going to be a fun and very inspiring workshop! Hope to see you all at the June meeting!!
Cheers, Mimi

2015–2016 Weaving Exchange: Christmas in June

Do you remember the feeling you get one week before Christmas as you try to get the last of your Christmas ornaments finished? Feeling panicky as you know that it will take only a few hours longer to finish the final touches on the perfect gift, but it always takes one more minute!

The year-end Christmas Ornament Exchange is not that feeling. It is a chance to see how creative everyone is. Please bring your fiber-related Christmas ornaments to the June Guild meeting. The hope is for every ornament you make you will get one in exchange. Thanks to everyone for taking the time to have fun!



✧Jeanette Tregagle

Thanks to Karen Elrod for Our May Meeting

Over the past few years, Karen has had the amazing opportunity to travel and weave with the indigenous peoples of Latin America. At our May Guild meeting, Karen shared some of her experiences with our Guild. It was fascinating to see the pictures of weavers in Mexico, Peru, and Guatemala, and also see some of the beautiful fiber pieces that Karen has brought back home with her. Many thanks to Karen for taking time to help us understand the wonderful fiber community that we share with people all over the world.



The Shuttle-Craft Bulletins Study Group



The Shuttle-Craft Bulletins study group meets to discuss Mary Atwater's work as described in the Shuttle-Craft Bulletins. We meet every other month at one of the study group member's homes, discuss the topic, and share samples and experiences. The meetings start with a section from Mary Meigs Atwater's biography.



The next meeting of the Shuttle-Craft Study group has been re-scheduled for August 19, 2016, at Sam Kievit's home. The topic of discussion will be Philippine bags, from the July 1925 and September 1936 issues. If you are interested in joining the discussion, please let Maureen Wilson (maureenmwilson@yahoo.com) know. Details on time and directions to Sam's home will be provided.

The topics, Bulletins, and meeting dates for this year are as follows:

<i>Topic</i>	<i>Bulletins</i>	<i>Meeting Date</i>
Baby Blankets	March 1925, May 1949	January 2016
Bronson Weave	April and May 1925	March 2016
Twill	June 1925, April 1929	May 2016
Philippine Bags	July 1925, September 1936	August 2016
Dress Fabric	August 1925, June 1944	October 2016

2016–2017 Guild Nominations

Here are the nominations for the elected officers on the 2016-2017 Guild board. Voting will be held at the June Guild meeting.

President: Mimi Rodes

Vice Presidents: Deanna Baugh, Juliette Landers

Secretary: Jane Roos,

Treasurer: Jo Stolhand,

Grants Officers: Jeanette Tregeagle, Karen Elrod

Shuttle-Craft Bulletins

Overshot for Coverlets and Other Things

The two Shuttlecraft Bulletins from 1927, February and May, address overshot patterns taken from coverlets. Overshot weaving dominated the Bulletins from this period, and so you will be reading about many more of them in articles to come.

The February Pattern is overshot Pine Bloom, a most famous of old patterns, intended for coverlet woven in wool on a fine warp, and may be used for other things. Though, Mary does not recommend it for rugs. Mary placed this pattern in Overshot Series 1, the Diamond and Cross family, Group (c) in her book on American Handweaving, as pattern No. 26. She states that in the South it appears in many different colors and different arrangements.

Pine Bloom may be adjusted for linens or bags, with what Mary calls the “blacks” made just half size without changing the proportions of the pattern. The long blocks of 16 may be done in 8 repeats. The 12 repeats of the table may be done in six. But, she advises, before attempting shortening a pattern, draw it out on graph paper or use a software program to make sure it will serve your purpose.

As with many overshot patterns there were other versions and other names for this one, such as Isle of Patmos in the New England area.

She gives specific instructions in the Bulletin on the threading for a coverlet, with the seam to run through the point marked “C”, when woven in two pieces and she gives the number of repeats for

the border, two repeats of the pattern, then the last repeat from beginning to thread 268. This will give a total of 1,252 ends in the warp, and if set at 30 epi, will be 41 inches in the reed.

She goes on to give instructions on weaving this pattern on the Structo loom, for a narrower piece, about 19” which Mary says may be used for a pillow top or a piece of drapery.



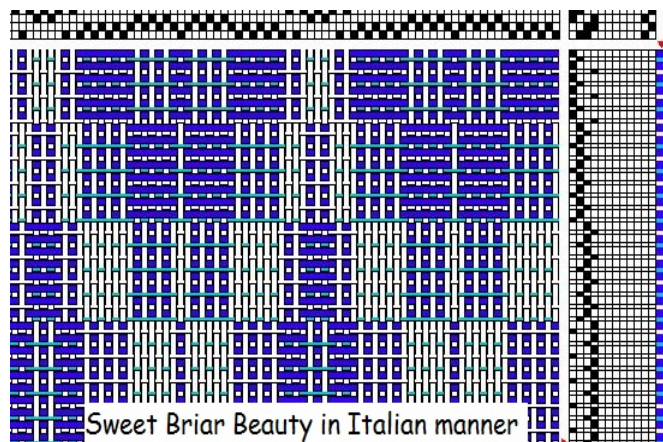
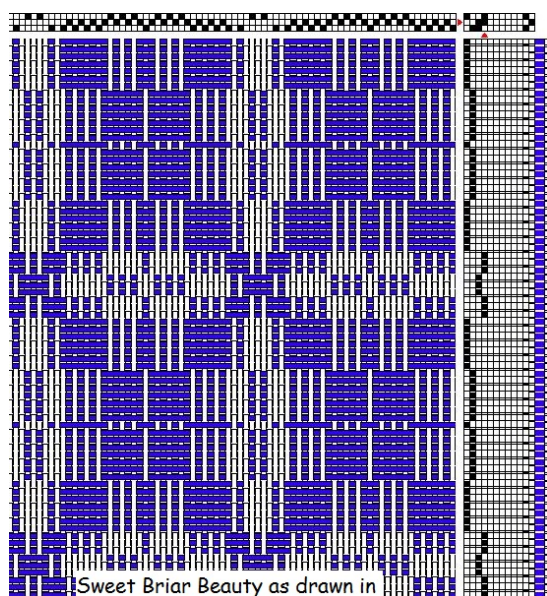
Pine Bloom

She also writes about the “Italian type” of weaving overshot. This is further described in her book, *The Shuttlecraft Book of American Hand-Weaving*. It is based on a treadling of overshot patterns adapted from Italian toweling: weaving the background in alternative pattern shots rather than in tabby, producing a soft, thick fabric.

This is usually woven in soft white cotton, but may done in colors, with one color for pattern and a contrasting

color for background. This option is intriguing and may be worth sampling in a simple overshoot pattern. She gives the treadling in her book, which is in the Guild library. Or weave the pattern treadles in order: 1, 2, 3, 4 and repeat, without a tabby, producing pattern figures in pleasant variety simply by changes in color.

Included is a draft of Sweet Briar Rose done in both the Italian manner and as drawn in.



In the May 1927 issue of the Bulletin, the overshoot pattern Whig Rose is included, another pattern that Mary calls best known and famous in the old coverlets. The draft is also useful for many purposes, runners, upholstery, wall hangings and others. It is also not recommended for rugs.

She gives instructions for weaving a coverlet using this pattern, with a warp of 1260 ends, 30 epi, would give a 42 inch wide warp in the reed.

Again, she gives a threading of almost 600 ends for the small Structo loom, for weaving pillow tops, runners or bags in this pattern.



Whig Rose Coverlet

If you are considering weaving a coverlet, I'd recommend the article at this link:

http://www.coverletweaver.com/uploads/5/8/5/2/5852090/design_elements_of_a_coverlet_-_part_3_may_2006.pdf

**Mary Meigs Atwater
Weaver's Guild of Utah**

June 2016 • Vol. 62 No. 6

Newsletter editors:

Susan Hainsworth, susanhainsworth@gmail.com;
Maureen Wilson, maureenmwilson@yahoo.com

The newsletter is published 10 times a year.
Any articles or information should be to the editor by the 5th of the month.

To join the Guild send \$30.00 (\$35.00 to receive the newsletter by mail) to Jo Stolhand, 264 Williams Avenue, SLC, UT 84111

To join the Guild e-mail list:
MMAWG-subscribe@yahoogroups.com

Guild website: www.mmawg.org

Guild meetings are generally held the 2nd Thursday of the month at the Unitarian Church 6876 South Highland Drive (2000 East)

2015–2016 MMAWG Board

President: Mimi Rodas, 801-619-6888, mimirodes@comcast.net

Vice Presidents: Deanna Baugh, 801-966-3642, num1weaver@gmail.com. Margarethe Lauer, 1-772-321-1105, nordicsnow@hotmail.com

Secretary: Jane Roos, 801-572-9997, gracey1849@yahoo.com

Treasurer: Jo Stolhand, 801-521-0069, jstolhand@q.com

Hospitality: Ping Chang, 801-545-0512, wanping801@gmail.com

Librarian and Equipment Contact:
Sonya Campana, 801-733-5888, sonyacampana@gmail.com

Grants Officer: Jeanette Tregeagle, knitweave@yahoo.com, 801-568-9645

Newsletter: Susan Hainsworth, 801-292-1169, susanhainsworth@gmail.com;
Maureen Wilson, 801-485-5241, maureenmwilson@yahoo.com

Website: Judie Eatough, 801-375-5535, judie@eatough.net

HGA representative: Jill Dahle, 801-446-5581, pjdahle@msn.com

Guild Calendar, 2015–2016

Saturday, June 11, 2016

Visit to the home of Catherine
Marchant, Alpine, Utah,
Potluck lunch and collection of
Navajo rugs