



The Weaver's Bag

Mary Meigs Atwater Weaver's Guild of Utah • January 2017 • Vol. 63 No. 1

January Guild Meeting, January 12

What: Scandinavian Weaving and Crackle Weaving Panel

When: Thursday, January 12, 2017, 6:30 p.m.

Where: South Valley Unitarian Church, 6876 South Highland Drive



At our January 12 Guild meeting, we will have an opportunity to learn more about Swedish weaving. First, Jo Stolhand will show pictures and talk about the weaving classes she recently took in Sweden (she recently wrote an article about her trip in the Guild newsletter).

In the second part of the program we will have an opportunity to ask questions of our "Crackle Weaving Panel." Please bring any questions that you have about the Guild Challenge and specifically about warping and weaving Crackle to get more help with the Crackle Weave sample challenge and exchange. Deanna Baugh will also show us how to turn a draft using Crackle Weave as her example.

We will be sharing some favorite books on Scandinavian weaving so that you can explore this wonderful style of weaving further. Judie Eatough will provide us with a handout to help understand the differences and uses of Scandinavian drafts.

President's Message

Happy New Year to All!



I hope everyone enjoyed the holidays and that we are all starting the year with a New Year's resolution to weave "From the Heart" for our March Show and "crackle" away for the May Crackle Challenge!!! "From the Heart: Expressions in Fiber" will be the Guild's 24th Biennial Show! I think that is pretty amazing! Please join me in expressing appreciation to Catherine Marchant for chairing the show!

Good News--our application for a grant to support the show was approved by the Utah Division of Arts & Museums, thanks to Jeanette's efforts as grant officer! The show opening will be the evening of March 9th, so be sure to save the date!! Sarah Jackson will be our keynote speaker.

Be sure and sign up for the Sarah Jackson "Color Confidence" workshop soon! As of New Year's Eve, there were only 10 slots left! Many thanks to Terri Pianka for managing the workshop! Terri is a new member this year, so if you haven't already met her, be sure to introduce yourself soon!

On the next page is a collage of wonderful photos from the Anita Mayer November workshop! Many thanks to all who contributed photos. It was such a fun and inspiring three days!

Happy New Year! Mimi

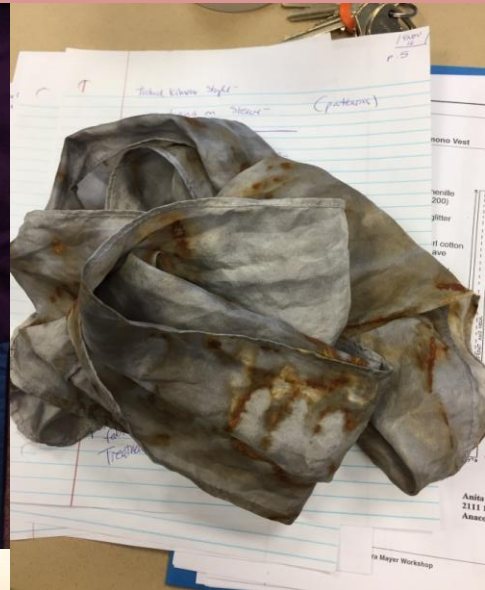
Summary of Guild Christmas Party on December 15

On December 15th, Guild members met at Mimi's house for a splendid Christmas dinner. Ping, who was unable to attend the party herself, provided a turkey, which was cooked to perfection by Mimi. Thanks to everyone for the wonderful array of dishes brought for the potluck.



After dinner and plenty of happy conversation, the gift swap began. A lot of thought and effort had obviously been put into the gorgeous handmade gifts that were exchanged, and everyone went home with something to treasure.

A few short announcements, specifically concerning the opening of registration for Sarah Jackson's upcoming workshop, were made before the meeting was concluded.



Spring 2017 Workshop—"Color Confidence," with Sarah Jackson

The Guild is happy to welcome Sarah Jackson as our guest teacher for this year's Guild Fiber Show. Sarah will be hosting a three-day workshop on weaving with color, titled "Color Confidence." The workshop will be held March 9-11, 2017, at the Utah Cultural Celebration Center, 1355 West 3100 South, West Valley City.



Sarah Jackson is the weaving editor at *Handwoven* magazine. Sarah states, "My design process often centers on color as I work within the limitations of the loom to stretch and explore the possibilities of color interaction. Color is one of the most exciting components of weaving, and learning to use colors confidently can be challenging. Mixing yarn colors doesn't work like mixing colors with paint, and even experienced professionals with in-depth color knowledge are often surprised by color effects in woven cloth."

Sarah will provide a warp for each student and the weft yarns that will be used in class. *Because the warps will be sent to the Guild for distribution around February 1, it is important to register early for this workshop.* The workshop will accommodate up to 24 participants and, at the time of this writing, the workshop is about half full. Each participant "will explore fresh ideas for developing color studies, learn how various weave structures impact color interaction, and understand how to effectively translate color combinations into woven cloth."

You will use your own loom for the entirety of this workshop, with the warp and weft yarns being provided by the instructor. We will be weaving on four harnesses for this workshop. Please bring your warped loom to the workshop. The Guild has looms available for rent if you need a portable loom for the workshop. Contact Sonya Campana at sonyacampana@gmail.com to make arrangements for a loom rental.

You can register in person for the workshop at the January meeting or send your registration to the address on the form (the form follows in this newsletter). Contact Terri Pianka at terri.pianka@yahoo.com with any questions.

Guild Show, March 9–April 27, 2017 "From the Heart: Expressions in Fiber"



The biennial Guild show is coming up very soon! We would love to have one or more fiber pieces from every Guild member as part of the show. Fiber artists from other disciplines will also be participating. Please see the Call for Entries that follows in this newsletter, and watch for complete registration information to come soon.



Students will explore color compositions, weave samples in 3 weave structures, and discover fresh ideas for effectively translating color combinations into woven cloth. This workshop is a combination of presentation, discussion, and weaving; it is not a round robin workshop.

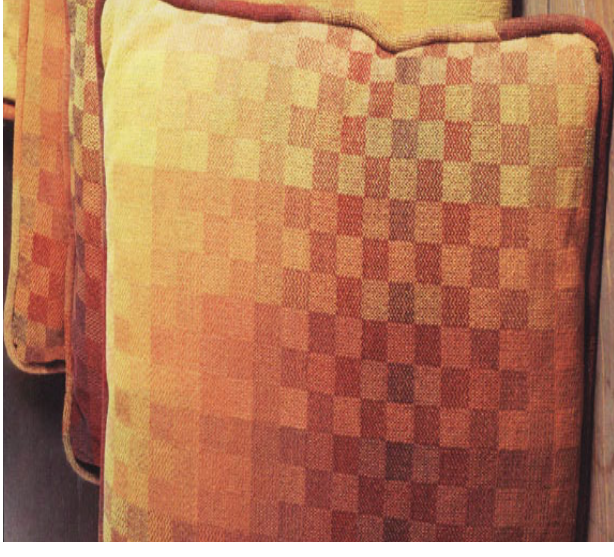
Students will complete the workshop with a greater understanding of how colors interact in woven cloth. They will know how to sample effectively and how to evaluate ideas for cloth using their sample color combinations. They will leave the workshop with woven samples and confidence in their own creativity. This workshop includes a pre-wound warp and a selection of over 60 colors of 8/2 cotton for weft.

Maximum class size: 24
Workshop Cost: Approximately \$165 for members and \$195 for non-members (depending on the number of participants)
Materials Fee: \$45 (includes notebook, color wheel, hand-outs, warp, and yarn)
Location: Utah Cultural Celebration Center

COLOR CONFIDENCE

Mar 9-11, 2017

With Sarah H. Jackson



Workshop Registration

Registration begins on Thursday, December 15. A deposit of \$50 is due upon registration (checks should be made out to MMAWG). The remaining balance is due at time of workshop. The final amount due will depend on the number of workshop participants.

Name: _____

Telephone: _____

Email: _____

Send registration form and check to: Terri Planka, Univ of Utah College of Nursing, 10 S 2000 E, SLC, UT 84112

Payment terms: The \$50 deposit is fully refundable until 30 days before the workshop.

Call for Entries

Mary Meigs Atwater Weaver's Guild Fiber Show From the Heart: Expressions in Fiber

March 9 through April 27, 2017
Utah Cultural Celebration Center, 1355 West 3100 South

Theme: *From the Heart: Expressions in Fiber*. We are hoping that you will make something for this show that has meaning to your life. It may commemorate an important event, symbolize a deeply held belief, memorialize a person dear to you, or represent an accomplishment, trial, or celebration. We would like you to write your story (a paragraph) about the meaning your piece has to you. We would like to display your story alongside your entry. (You will be able to write your story on the entry form.)

Entry Information: Drop off pieces on March 3 from noon to 6:00 p.m. at Utah Cultural Celebration Center. An entry fee of \$15 (for Guild members) and \$20 (for others) will allow you to enter three pieces. Items completed in the past two years will be eligible for an award. You have the option of listing a selling price or marking the item not for sale. All forms of fiber art are welcome.

Show Opening: The opening reception will be held on Thursday, March 9, from 6:00 to 8:00 p.m. Sarah Jackson, nationally known weaver, will speak, and awards will be presented.

More Information: Registration forms and further details will be available shortly. Please check the Guild's website: mmawg.org.

Any questions, contact:

Catherine Marchant
fibernbeads@gmail.com 801-216-4722
Susan Hainsworth
susanhainsworth@gmail.com 801-860-6483

Shuttle-Craft Bulletins on Weaving for Clothing

This article reviews two Shuttle-Craft Bulletin issues, March 1929 and August 1939, by Mary Meigs Atwater and her daughter, Betty Atwater Biehl on weaving for clothing. In 1929, Mary gives the following advice:

The weaver should consider color and texture for the fabric, pattern is not so important. Unless you are a seamstress, hire a professional who can work with the handwoven fabric, since poor execution in sewing the clothing will result in a dowdy final product, no matter how well it is woven. A seamstress or tailor can advise on the yardage needed. But, she advised not to forget to allow for shrinkage, the fabric should be wet finished before it is used.

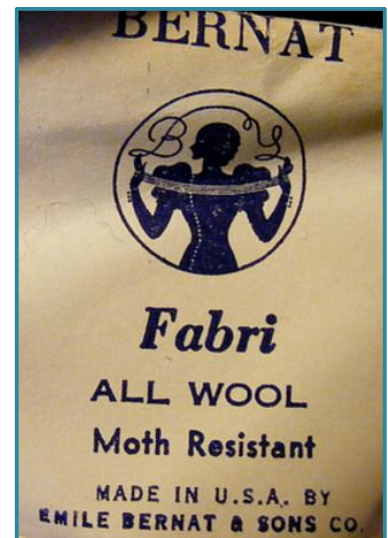
In terms of color, that depends on personal taste and the style of the moment. Mary recommends safer colors, pastels or neutral shades and to avoid anything too “flashy.” For texture, she recommends plain weave, using a soft, fine yarn in the fashion of the day, woven evenly and lightly. Twills produce a thicker fabric and are more suitable for coats, or outerwear. She included examples of more fancy weaves: Leno for blouse fabric, Ms and Os, Bronson or even Crackle weave. Simpler and more classic seems to be better for clothing fabric.

For materials, she tends toward fine wool yarns. Bernat produced a yarn then known as “Fabri,” which she favored, reporting that it gives a fabric with a good deal of body. This yarn is no longer available but has been identified by Harriet C. Douglas, 1949 in *Scotch Tartan Setts, a Shuttle-Craft Guild Guide for weaving 132 Traditional Plaids*, as an 18/2 wool, with 4800 yards per pound. You can see a few skeins stashed on Ravelry, a social media site for fiber enthusiasts (www.Ravelry.com). A viable substitution may be JaggerSpun superfine Merino 2/18s Lace Yarn sold by Halcyon Yarn and the Yarn Barn of Kansas, among others. This yarn is made in Maine of Australian superfine merino wool and comes in 45 shades, with a recommended sett of 22-28 epi for plain weave.

She recommends trying two shades, one for the warp and another for the weft. I have used two very closely related shades of one color this way and found it to produce a very interesting fabric, colorwise.

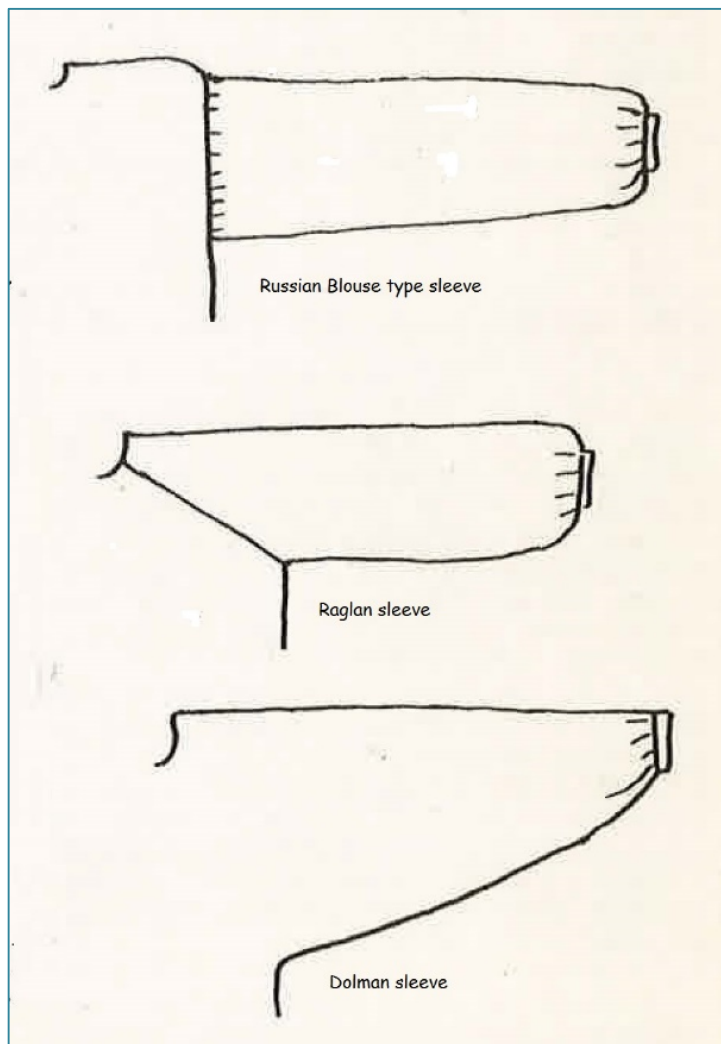
She gives a few drafts and treadlings: one for an 8 shaft twill, one in Ms and Os, Summer and Winter, and a reference to a previous issue Crackle draft. She recommends color combinations for these, but refers to the several Fabri colors by number, sadly and these are now lost as a reference.

She highly recommends sampling, including wet finishing to determine if the fabric will work for the intended garment. She also reviews the “linsey-woolsey” fabric, popular at the time, with a fine linen or cotton warp and wool weft, as a possibility for dress fabric.



In the 1939 Bulletin, Betty Beihle, makes some of the same recommendations, including using a professional seamstress and Fabri yarns. She addresses more of the particular dress styles and seaming in skirts to offset any bagging of the handwoven fabric. She also preferred plain weave and recommended the same yarns for warp and weft, saying that combining different yarns is not always successful. In terms of cutting the fabric, something many weavers avoid, she recommends weaving the exact width needed, which would take some extra planning and analysis, or chalking the pattern outline and stay-stitching the cutting line to avoid raveling of the fabric. She addresses sleeve styles, avoiding set in sleeves, preferring those that work better with a more open weave material, which handwoven fabric tends to be. See the drawing from the Bulletin.

The clothing styles recommended are generally classic and simple. This garment is meant to last a long time, so classic styles are preferred, and faddish ones to be avoided. Betty weaves extra yardage for future makeovers.

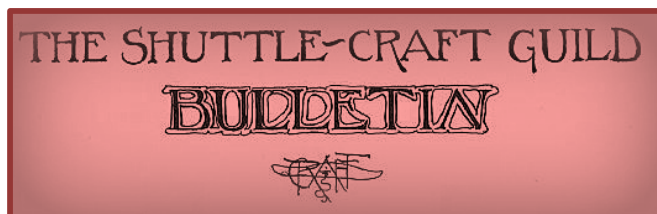


As a well-fitted garment is important, Betty recommended the use of a dress model. The weaving instructor, Daryl Lancaster, known for weaving fabric for garments also recommends this.

Daryl has written a three-part document called *The Weaver Sews*, published by *WeaveZine* online in 2010. Here is the link: <http://www.weavezine.com/columns/weaver-sews-0.html>. I recommend reviewing them if you are considering weaving fabric for clothing. Daryl also provides links to several pre-recorded seminars on garment construction on her blog, www.Weaversew.com. Check the schedule link.

Betty recommends double sewn seams, and taped raw edges for a more secure finish. She includes some trimming suggestions, such as card woven bands for collars, cuffs or belts to get an unusual and pleasing effect. She finishes by stating that all of these details may make the construction of a handwoven dress seem very difficult, but assures that that is not the case. She recommends several commercially available sewing patterns of the day. There are weavers online and in the Guild who have their favorite patterns that work well with handwoven fabric. I'm sure that an online search will yield many options.

The Shuttle-Craft Bulletins Study Group



The next meeting of the Shuttle-Craft Study group is scheduled for **February 2017** at Ping's home. We forgot to set a date at the December meeting because we were having such a good time, so I suggest **February 16**. Please let me know if that does *not* work. The topic of discussion will be warping, from the September 1925 and December 1936 issues. If you are interested in joining the discussion, let Maureen Wilson (maureenmwilson@yahoo.com) know. Details on time and directions to Ping's home will be provided.

The Shuttle-Craft Bulletins study group meets to discuss Mary Atwater's work as described in the Shuttle-Craft Bulletins. We meet every other month, generally on the third Thursday, at one of the study group member's homes, discuss the topic, and share samples and experiences. The meetings start with a section from Mary Meigs Atwater's biography.



The topics, Bulletins, and meeting dates for this year are listed below:

<i>Topic</i>	<i>Bulletins</i>	<i>Meeting Dates</i>
Warping	Sept 1925, Dec 1936	February
Weaver's Ideas	Oct. 1925, Nov 1925	April
Household Weaving	Dec 1925, Nov 1933	June
Jackets and Coats	Jan 1926, June 1926	August

Fiber Event Roundup

Intermountain Weavers Conference
Fort Lewis College, Durango, Colorado
July 27-30 2017 ✨ *Jill Dahle*

Mary Meigs Atwater Weaver's Guild of Utah

January 2017 • Vol. 63 No. 1

Newsletter editors:

Susan Hainsworth, susanhainsworth@gmail.com; Maureen Wilson, maureenmwilson@yahoo.com

The newsletter is published 10 times a year. Any articles or information should be to the editor by the 5th of the month.

To join the Guild send \$30.00 (\$35.00 to receive the newsletter by mail) to Jo Stolhand, 264 Williams Avenue, SLC, UT 84111

To join the Guild e-mail list:
MMAWG-subscribe@yahoogroups.com

Guild website: www.mmawg.org

Guild meetings are generally held the 2nd Thursday of the month at the Unitarian Church 6876 South Highland Drive (2000 East)

2016–2017 MMAWG Board

President: Mimi Rodas, 801-619-6888, mimirodes@comcast.net

Vice Presidents: Deanna Baugh, 801-966-3642, num1weaver@gmail.com. Juliette Lanvers, 801-860-5481, juliettelanvers@icloud.com

Secretary: Jane Roos, 801-572-9997, gracey1849@yahoo.com

Treasurer: Jo Stolhand, 801-521-0069, jstolhand@q.com

Hospitality: Ping Chang, 801-545-0512, wanping801@gmail.com

Librarian and Equipment Contact:
Sonya Campana, 801-733-5888, sonyacampana@gmail.com

Grants Officer: Jeanette Tregeagle, knitweave@yahoo.com, 801-568-9645

Newsletter: Susan Hainsworth, 801-292-1169, susanhainsworth@gmail.com; Maureen Wilson, 801-485-5241, maureenmwilson@yahoo.com

Website: Judie Eatough, 801-375-5535, judie@eatough.net

HGA representative: Jill Dahle, 801-446-5581, pjdahle@msn.com

Guild Calendar, 2017

Thursday, January 12, 2017

Scandinavian Weaving and Crackle
Jo Stolhand and Crackle Panel

Thursday, February 9, 2017

Saori Weaving
Karen Elrod

Thursday, March 9, 2017

Opening of Guild Show
(Utah Cultural Celebration Center)

March 9–11, 2017

“Color Confidence”
Three-day workshop with
Sarah Jackson

April 13, 2017

Basket Weaving
Connie Denton

May 11, 2017

Crackle Sample Exchange Meeting
Sonya Campana
Handweavers Guild of America Update
Julie Schwartz

June 2017

Shibori and Indigo Dyeing
Lisa Chin