



The Weaver's Bag

Mary Meigs Atwater Weaver's Guild of Utah • December 2019 • Vol. 66

December Guild Meeting

What: Guild Christmas Party, Potluck Meal, and Gift Exchange

When: Thursday, December 12, 2019, 6:30 p.m.

Where: Mimi Rodes's home, 9 Courtside Lane, Sandy, UT 84092

Be sure to put our annual December Christmas party on your calendar. On Thursday, December 12, we will meet at Mimi Rodes's home for a potluck dinner, fiber gift exchange, and the chance to enjoy the spirit of the season with our friends. Mimi's home is beautiful and inspiring, and this evening is always a treasured evening for those who attend.



Plan to bring a potluck dish. Ping and her husband have generously given us a turkey, and Mimi will be making cranberry sauce and gravy. The Guild will provide drinks and hospitality supplies. Please bring a dish to share!

Please also bring a wrapped gift that can be exchanged with another Guild member. Gifts can be anything that a fiber fanatic might enjoy. Gifts can be simple (\$20 or less) or small treasures from your stash—just come and share in the fun! Mimi will post the directions to her house on the Guild's email list. If you have questions, please give her a call at 801-619-6888.



President's Message

Holiday Greetings, Weavers!

'Tis the season, and I feel like celebrating! As a Guild we have lots to cheer about. Our recent sale was a success, and Sara Bixler's workshop kept everybody entertained learning how to weave Turned Monk's Belt with schnazzy yarns. It was a blast!! I now have a backlog of several Turned Monk's Belt projects.

This spring we have much to look forward to as well. Ruby Leslie is coming to teach a three-day workshop on the 3-D's of weaving: deflection, differential shrinkage, and double weave. (Look for workshop information coming out with this newsletter). We also have our fabulous monthly meetings to gather for fellowship and weaving – fiber arts education.

I am also happy to be a part of this year's challenge: Weaver's Poker. I hope there are lots of members holding a hand of cards and starting on their journey. We have until May to get our challenge projects done.

Let's celebrate together at Mimi Rodes's home on Thursday, December 12.

Wishes of Good Cheer, Health, and Happiness
Sonya Campana

What an Amazing Sale!

Many, many thanks to everyone who contributed their textiles to our SECOND ANNUAL Guild sale! It was held on November 15 and 15 at the Unitarian Church where we hold our meetings. We especially want to thank Catherine Marchant, who gave us the encouragement and courage we needed to have a Guild sale last year that was such a success we had another one!

If you attended the sale, you will realize what beautiful textiles are being created by our Guild members. It was wonderful just to walk around and see the beautiful work. We had many people come to the sale – some who had no connection to our Guild. Thank you to everyone who helped set up, take down, take receipts, and bring or buy beautiful textiles.

We did very well financially, bringing in \$5,486.00! Start planning now for next year's sale. We will definitely have one!

Remember to Pay Dues!

The end of the year is approaching, and we would love to have all dues paid by the end of December. If you haven't paid your dues, please remember to bring them to Ping Chang at the December meeting, or you can pay on the Guild website (mmawg.org). Guild membership dues are a real bargain at \$30 per year (\$35 if you want the newsletters mailed to you).

2019–2020 Guild Challenge: A Design Journey Inspired by the Cards You Were Dealt!

For this year's Guild Challenge, drawing your hand is just the starting point. Four different sets of cards were prepared. Yellow cards specify a weave structure; blue cards specify types of fiber; orange cards specify color; and finally, green cards specify design. Each of us will use our four cards as our guides as we find inspiration and design and weave . . . something! The final woven product can be anything you would like, but please keep track of your inspirations, how you faced your challenge, what was tricky, and what was easy.

We ask that you keep track of your journey. What was most challenging? Where did you find inspiration? What did you learn? What was your biggest surprise? What was easy? How did you decide what to make? And through this year, we will be sharing weaver's poker journeys in the Guild newsletter. A new monthly column will be published in *The Weaver's Bag*, our Guild newsletter. Each month we hope to have one participant reflect on their design journey, and especially those parts of the challenge they have been addressing most recently. At the end of the challenge, we will photograph all submissions and publish an ebook with drafts, a summary of your progress, and photographs of the products.

Susan Hainsworth will reveal her Poker Hand this month and tell us how these cards play into her decisions about what to weave for this challenge. Our goal is to include many voices as we extend this column all year. Please consider sharing your story.

If you want to participate in the Guild Challenge and haven't drawn your cards, please contact Leslie Sieburth or Juliette Lanvers.

Guild Challenge Reflections, by Susan Hainsworth

I haven't usually participated in the Guild Challenges because I work full-time and don't weave as much of my work as I would like. But this Challenge intrigues me. Here is what I drew:

Color—Pastels

Weave Structure—Crackle

Design—Checks

Fiber—Bamboo

I don't weave much with pastels, but I look forward to incorporating pastels into a weave that includes other colors. I have been wanting to try weaving Crackle weave for quite some time because it was so important to Mary Atwater and because Juliette Lanvers' work with Crackle has been so inspiring to me! Checks are easy for me to think about because I often weave with stripes or checks. And bamboo is something I've never used, so it will be great to try.

What will I do? Well, I'm already thrilled with this opportunity. I was visiting Juliette's studio recently (a place where I never fail to be inspired), and it turns out that we have elements of our Challenge in common. So we are going to share ideas and help each other work out what we will do. Even though I am just getting started with the Challenge, I am already grateful for the opportunity to think with a wonderful weaver and develop something new!

November Meeting: IWC and Maximo Laura Workshop Recap



Show and Tell: Many samples from the Sara Bixler supplementary warp were shown by Sarah, Linda, Mimi, Jeanette, Kathryn, Sam, Jo, and others. Here are a couple of examples. We also saw an Estonian lace knit shawl from Jeanette, a 5-shaft point twill for bags and an exploration of a Monks Belt weave on the same warp by Juliette. Kathryn Y. had a shadow weave scarf; Michelle, a scarf done in Ms and Os. Mimi also brought her beautiful tapestry from Maximo Laura of the harpist – a beautiful piece.



Guild Business: The Guild sale, the St. George exhibit, the Ruby Leslie workshop in the spring of 2020, and the Christmas party next month were discussed.



Guild Program: The Guild program on IWC courses and the Maximo Laura workshop then followed. Maureen and Jill reviewed their experiences and samples from the class about cross-dyeing with natural dyes, taught by Catherine Ellis. Susan then told us about her rep weave class with Rosalie Nielson, describing the materials used, the weave itself, and finishing with Cavandoli knots. Information on the knots used to finish these pieces can be found at this link: http://www.pikespeakweavers.org/pdfs/newsletter/dec_15/PPWG_newsletter_dec_2015.pdf (see page 4).

Mimi and Sonya then talked about their experiences taking a tapestry workshop this summer at Maximo Laura's studio in Peru. They had a great experience weaving the colorful, multi-technique samplers, one shown here. The tapestries are woven with fine yarns, blended to produce the color changes. The workshop included the design process.

Shuttle-Craft Bulletins: On Weaving Equipment

The December 1933 and 1942 issues of the Shuttle-Craft Bulletin address the weaver's equipment. Mary designated the December issue the "equipment" Bulletin and reviewed the main pieces of equipment in the weaver's tool kit.

Reeds—The reed (also called a "sley," according to the 1933 Bulletin) takes its name from the material used to make them originally—slips of bamboo. But, Mary wrote that many prefer the modern standard metal. She gave advice on treating rusted metal reeds and noted that the reed rarely rusts on a loom in regular use. She recommends having several reeds, but wrote in 1941 "that if the war lasts long enough we may not be able to buy either reeds or heddles."

Heddles—Mary preferred metal heddles over string, though she admitted that string heddles made a more picturesque loom. She suggested that string heddles might be starched or dipped in shellac to make them easier to handle and keep the knots from slipping. She included a guide for tying your own.

Shuttles—Shuttles described by Mary were pretty much as we see today: stick shuttles, rug shuttles, and throw or boat shuttles. Not included were the end feed shuttles that many weavers use now. She described the appropriate use for each and noted that weavers should have many to avoid rewinding colors.

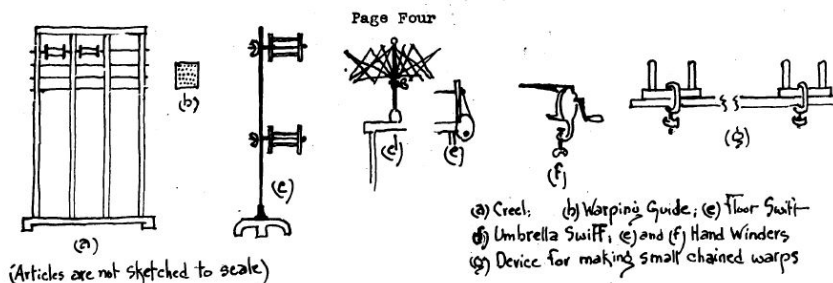
Looms—In 1941 the Gilmore "American" Inkle loom was introduced. The model, she wrote, had many improvements over the "old English" model—a nice, sturdy little loom. She wrote of a fly shuttle loom that was also a new type.

Mary's main issue on the topic of looms is that they be in good working order. She wrote that as she traveled to different weaving centers, she observed weavers struggling to weave with looms that were out of true or that provided an inadequate shed. She stressed the need to go over one's loom and make repairs if possible.

"I should like to ask each member of the Guild to take time out this month to go over his or her own weaving equipment. . . . If you find a fault, do something about it."
Mary M. Atwater

Treadles—Mary preferred attaching the treadles to the loom at the back for better leverage, especially with larger looms. On an 8-harness loom, she recommended 12 treadles at a minimum, which would need to be narrow and set close together. This would be better facilitated with a rear attachment.

Warp winding equipment—As mentioned last month, Mary liked sectional warping. She wrote that she could put on a warp sectionally in an hour, where it would take her ten hours to warp using a warping board. To warp sectionally, she listed the spool rack or "creel" with a capacity of at least 60 spools. One would use a warping guide, a metal plate punched with as many or more holes, used to space the threads and keep them from snarling. Threads are taken off the creel from the bottom and should not cross. These pieces, and winding equipment such as swifts and hand winders, are shown in Mary's sketch here.

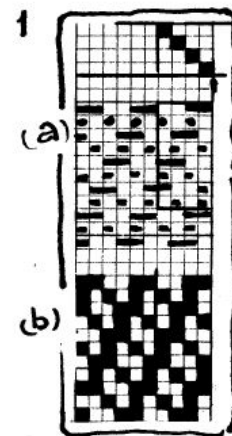


A couple of current resources on weaving equipment and their care are *Weaver's Companion Presented by Handwoven Magazine* (Interweave Press; see pages 6-22 and beyond). Handwoven online workshop: The Loom Owner's Companion with Tom Knisely: <https://learn.longthreadmedia.com/courses/the-loom-owner-s-companion-with-tom-knisley>. Information in this workshop includes:

- The tools that every weaver should have
- Easy steps to keep your loom and other weaving tools in top working order

Also included in the 1941 issue is the topic of developing a draft from a small fabric sample. Mary recommended designating which are the warp and weft threads, then taking a large needle, separating the threads, and laying out the plan of the interlacing on graph paper (10 squares per inch was recommended) as shown in the example. It may be drawn as in (a) or (b). A magnifying glass would be helpful. Mark off the repeat of the weave in both warp and weft.

Lastly, she wrote about signing your work. In an earlier bulletin she recommended it. In 1941, she wrote that a signature on a work should be inconspicuous and modest or it may detract from the work. If a signature is wanted, she wrote that it might be appropriate that a small symbol of some kind be used, like a series of dots woven into a header. Otherwise, she wrote that unless the signature adds interest and value, let it be nameless.



Guild Library Report

Dear Weavers: Here are some things I have been planning for our Guild Library:

I will be renewing the *Handwoven* and *Vav* subscriptions. In the last *Handwoven*, I saw some books that I will have to look into for our library. I plan to buy some DVDs and books each year. If you have any requests, shoot me an email and I'll look into it.

As far as the Guild Challenge, I want the people participating in the challenge to utilize the library's resources. I drew my cards, and I know that the first thing for me is to do research on all the topics. I am lucky there is that wonderful library in my basement at my disposal. But it is there for you guys as well. Contact me by email with any material requests that you have and I will get back to you. I don't have any imminent travel plans, and I am home most days for folks to drop on over. I love the company!

On the Guild website (mmawg.org), under "Resources," there is a list of most items in the library. Check it out!

SonyaCampana
MMAWG Librarian
801-707-8356
sonyaccampana@gmail.com

The Shuttle-Craft Bulletin Study Group



The 2019–2020 Guild year meeting schedule for the Shuttle–Craft Bulletin Study group is presented below. The next meeting will be on December 16 at 7:00 p.m. at Catherine Marchant’s home. The topic of discussion will be s rugs, weft-faced and warp-faced, from the December 1927 and August 1931 issues. If you are interested in joining the discussion, let Maureen Wilson know (maureenmwilson@yahoo.com).

The Shuttle-Craft Bulletins study group meets to discuss Mary Atwater’s work from the Shuttle-Craft Bulletins. This is a very informal group – if you have not participated, try a meeting and see if you want to join. The meetings usually start with a reading from Mary Meigs Atwater’s biography.

<i>Topic</i>	<i>Bulletins</i>	<i>Meeting Date</i>
Rugs, wool chenille, warp-faced and weft-faced	December 1927, August 1931	December 16, 2019
Coverlets from Pennsylvania museum and profile drafts	January 1927, April 1927	February 2020
Bags and pine bloom pattern	February 1927, December 1928	April 2020
Neckties and scarves, Double bow knot and Double chariot wheel patterns	June 1927, November 1927	June 2020
Lace weaves, blanket and shawls	May 1927, February 1932	August 2020

Mary Meigs Atwater
Weaver's Guild of Utah

November 2019 • Vol. 66 No 9

Newsletter editor: Susan Hainsworth,
susanhainsworth@gmail.com. The newsletter is
published 10 times a year.

To join the Guild send \$30.00 (\$35.00 to
receive the newsletter by mail) to Ping
Chang, 7 Courtside Lane, Sandy, UT 84092

To join the Guild e-mail list, contact Susan
Hainsworth, susanhainsworth@gmail.com

Guild website: mmawg.org

2018–2019 MMAWG Board

President: Sonya Campana, 801-733-5888,
sonyaccampana@gmail.com

Vice Presidents: Jo Stolhand, 801-521-
0069, jstolhand@q.com; Jeanette Tregeagle,
801-971-6925, knitweave@yahoo.com

Secretary: Ping Chang, 801-891-5137,
wanping801@gmail.com

Treasurer: Sara Lee Neill, 801-829-3703,
slneill@xmission.com

Hospitality: Ann McKane, 206-371-5814,
mckaneann@gmail.com

Librarian: Sonya Campana, 801-733-5888,
sonyaccampana@gmail.com

Equipment Coordinator: Susan Hainsworth,
801-860-6483, susanhainsworth@gmail.com

Grants Officer: Mimi Rodes, 801-619-6888,
mimirodes@comcast.net

Newsletter: Susan Hainsworth, 801-860-6483,
susanhainsworth@gmail.com; Maureen Wilson,
801-485-5241, maureenmwilson@yahoo.com;
Leslie Sieburth, 801-424-2676,
sieburth@biology.utah.edu

Webmaster: Nancy Crowley, 1-505-480-8079,
ludmillalily@outlook.com

IWC Representative: Nancy Crowley, 1-505-
480-8079, ludmillalily@outlook.com

Guild Challenge Coordinator: Juliette Lanvers,
801-860-5481, juliettelanvers@icloud.com

Guild Calendar 2019–2020

December 12, 2019

Christmas Party
at Mimi Rodes's Home

January 9, 2020

Linen Weaving,
by Deanna Baugh

February 13, 2020

Diversified Plain Weave,
By Juliette Lanvers

March 12, 2020

Saori Weaving,
By Karen Elrod

April 9, 2020

Presentation by Ruby Leslie

May 14, 2020

Swedish Lace,
By Charlene Lind

June 2020

Studio Tour and Potluck Lunch