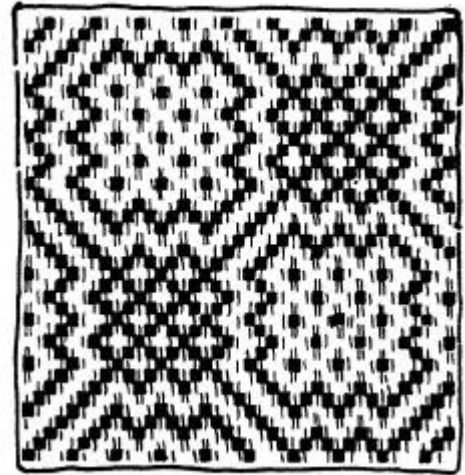


## Shuttle-Craft Bulletin: Weaving Coverlets

From 1928 to 1948, Mary wrote about coverlet weaving in January 19 times, recognizing January as “Coverlet Time” for the Guild. In 1932 and 1934, she wrote pretty much the same article as she had in the past. It was a good time of year to take on a large weaving project, now that the holiday activity had slowed and it was generally a shut-in time of year.

In both Bulletins, she reviewed pattern and materials, stating that the choice of these go together. For the traditional overshot coverlet, the warp and tabby weft is of fine cotton, while the pattern weft is wool. A full size coverlet is made up of 2 sections 42 to 44 inches wide, woven 3 yards long, requiring 3 pounds of the cotton yarn and 4 pounds of yarn total. She gave instructions for estimating the required amount of yarn. She reviewed traditional Colonial color combinations and modern alternatives. In 1932, the draft included was for a new type of coverlet on an old pattern, to be woven without a tabby – called the Italian fashion by Mary, see the diagram here:

In 1934, she reviewed several pattern options, some from the Shuttlecraft book and others from the current Recipe Book. The draft 108 she mentioned is from an old book by Eliza Calvert Hall’s book on



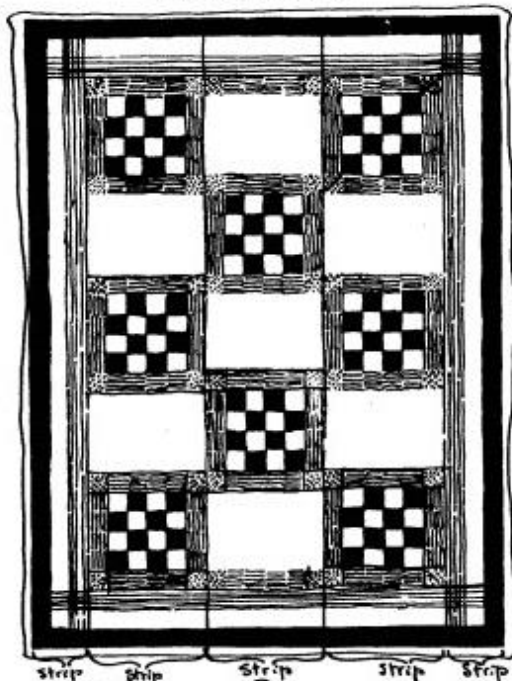
handwoven coverlets. It is

called *Sunrise and Dog Tracks*, from an old coverlet woven in overshot. Mary gave material recommendations for warp and weft as well as color combinations. She also provided a draft for a Structo 600 loom, a 20 inch wide weaving width, to be done in 4 strips and then sewn together. This draft, done in Summer and Winter weave is called *Patchwork* and is shown here. She described it as following the modern day trend toward large, plain figures, and considered it to be out of the ordinary.

Other items covered include: a traveling exhibit of woven articles by members and how it is a valuable way to exchange ideas and experience. She wrote that several members would invite non-weavers to see the exhibit and how the Shuttlecraft Guild does so much to promote the craft, to educate on the value of hand weaving and how much we need beauty and must create beauty to avoid spiritual starvation.

In 1934, she wrote that department stores may be introducing looms and hand weaving and suggested that weavers watch for these developments in their communities.

Sketch of Coverlet



The sketch above shows Pattern (a)  
 Pattern (b) is the same except that each breadth covers a full repeat—two complete figures.  
 The finished coverlet is four figures wide instead of three figures wide as shown.

M.M. Atwater, 1933  
 Basin, Mont.